

# WAI'ANAE WATERSHED MANAGEMENT PLAN

## Project Overview

The Honolulu Board of Water Supply (BWS) and Department of Planning and Permitting (DPP) are undertaking an update to the Wai'anae Watershed Management Plan (WWMP), which was last adopted in August 2009. The WWMP establishes policies, projects, and strategies for the sustainable management and use of surface and ground water resources in the Wai'anae Planning District through 2045 (see project area map). The WWMP update will be prepared in accordance with the State Water Code Chapter 174C, HRS and the City and County of Honolulu Ordinance Chapter 30, ROH. The WWMP will be one of eight district water management plans that together comprise the O'ahu Water Management Plan.



SCAN HERE  
TO VISIT THE PROJECT WEBSITE

### Goal of the O'ahu Water Management Plan:

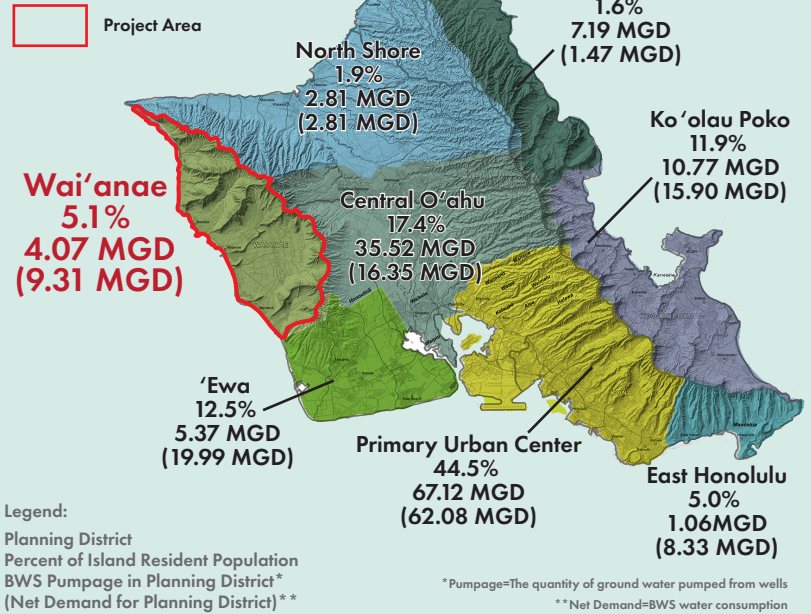
“ To formulate an environmentally holistic, community-based, and economically viable watershed management plan that will balance: (1) the preservation and management of O'ahu's watersheds, and (2) sustainable ground water and surface water use and development to serve present users and future generations.

### The planning process will integrate land use and water resource management to achieve:

- 1) **Inclusive** community participation and consultation.
- 2) **Holistic** management of watershed resources.
- 3) **Policy alignment** with State and City policies and programs.
- 4) **Action** to facilitate implementation of important watershed management programs.
- 5) **Ahupua'a-based** management principles.

### Island of O'ahu DEVELOPMENT PLAN AREAS

Estimated Population Distribution and BWS Water Demand (Avg. 2020-2024)

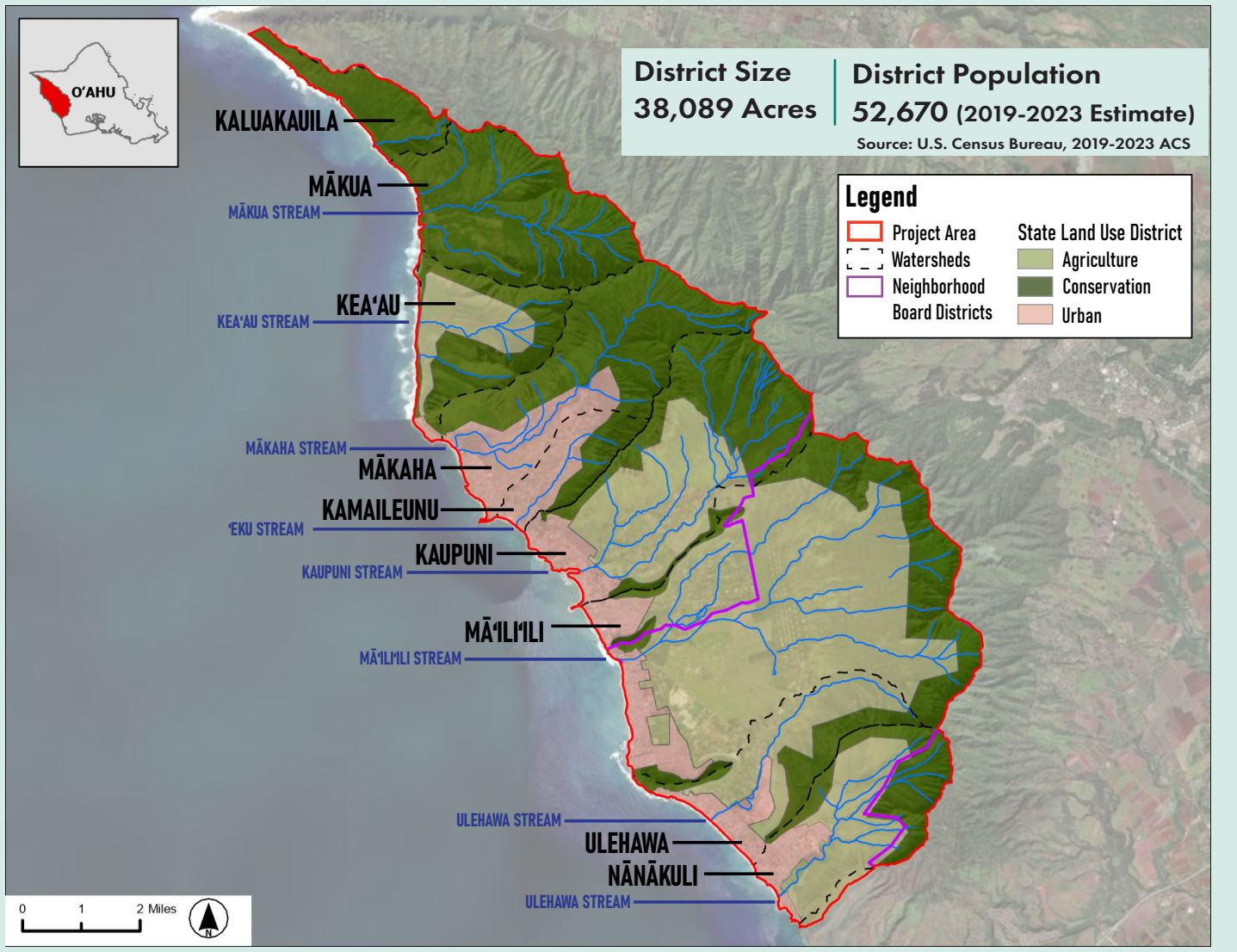


## Planning Process



# Project Area

Wai'anae Planning District: Ka'ena Point to Nānākuli



## Related Initiatives

### Wai'anae Sustainable Communities Plan Update

The City and County of Honolulu Department of Planning and Permitting (DPP) is currently updating the Wai'anae Sustainable Communities Plan (WSCP), which was last adopted in 2012. This comprehensive review will assess the appropriateness of the WSCP's regional vision, policies, guidelines, and implementing actions, as well as its consistency with the City's General Plan. The WWMP will be developed to align with the updated WSCP, which is expected to be complete in 2025.

### Wai'anae Groundwater Management Area Designation

BWS is petitioning the State Commission on Water Resource Management (CWRM) to designate the Wai'anae Aquifer Sector Area as a Ground Water Management Area. This designation would afford the Wai'anae Aquifer Sector the same level of protection as all other aquifers of O'ahu. BWS is seeking this designation in order to ensure a sustainable water supply for the community in the face of development pressures and uncertainties such as climate change, which is causing decreasing rainfall trends and affecting groundwater levels and stream flows. Additionally, increasing temperatures will drive up water demand as evapotranspiration rates increase.

For more information, please contact:



**HONOLULU BOARD OF WATER SUPPLY**  
 Contact: Dominic Dias  
 Phone: (808) 748-5928  
 Email: ddias@hbws.org



**SSFM INTERNATIONAL**  
 Contact: Lala Nuss  
 Phone: (808) 531-1308  
 Email: lnuss@ssfm.com