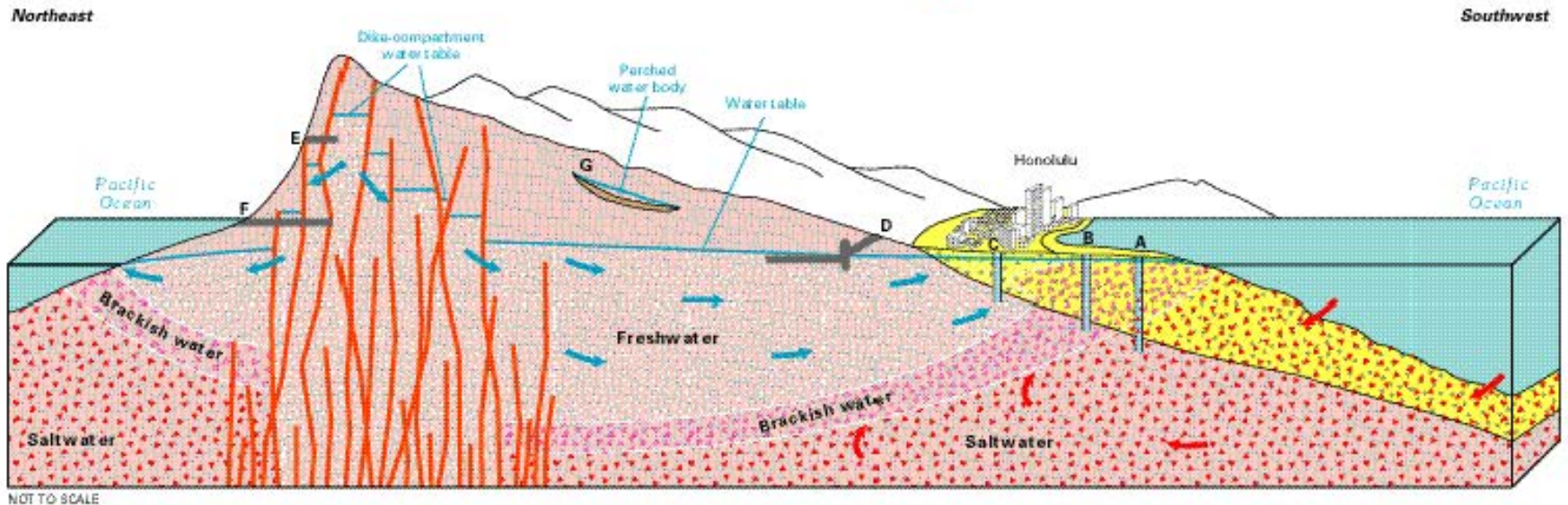
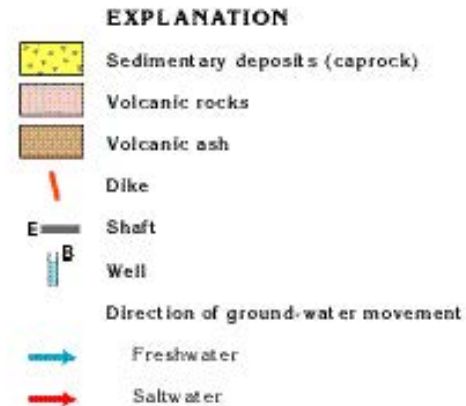


Figure 39. On Oahu, freshwater is in a lens and dike-impounded water bodies and can be confined or unconfined. Wells A, B, and C are completed in a confined volcanic-rock aquifer. Well A produces only saltwater, well B produces brackish water, and well C produces freshwater. Shaft D produces large quantities of freshwater by skimming ground water just below the water table. Shafts E and F are constructed at different altitudes in dike-impounded water bodies; shaft F intercepts more dikes and likely will supply larger quantities of fresh water than shaft E. A bed of low-permeability ash creates a localized perched water body at site G.



Modified from Macdonald, G.A., Abbott, A.T., and Peterson, F.L., 1983, *Volcanoes in the sea: The geology of Hawaii* (2nd ed.): Honolulu, Hawaii, University of Hawaii Press, 517 p.