

CENTRAL O'AHU WATERSHED STUDY

 U.S. Army Corps of Engineers



Honolulu Board of Water Supply

PROJECT BACKGROUND

The U.S. Army Corps of Engineers is assisting the Honolulu Board of Water Supply with an inventory of watershed data and land uses. These various land uses within the watershed have the potential to impact ground and surface water quality and quantity in the Central O'ahu area.

The Central O'ahu area encompasses all of the streams that flow into Pearl Harbor, as well as all of the 'Ewa District.

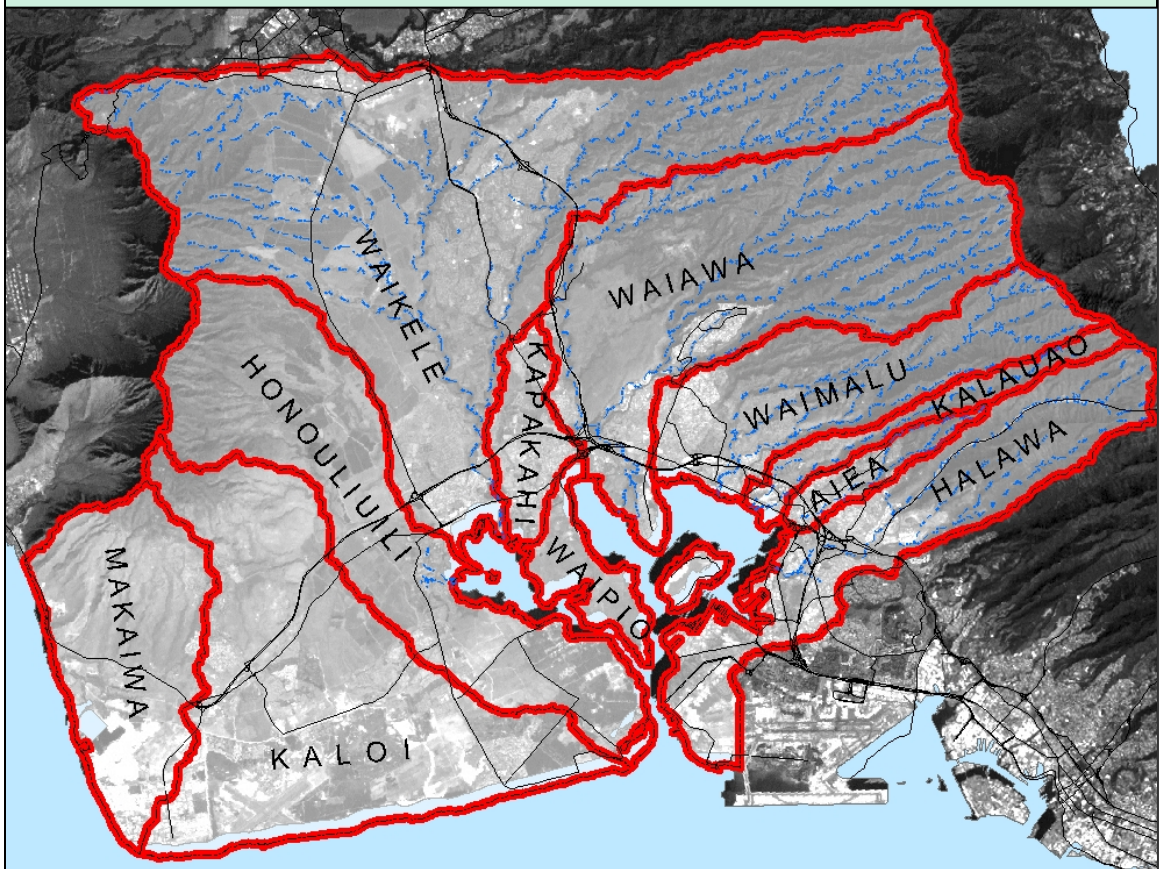
Central O'ahu Issues:

- Variety of water resources: streams, bays, estuaries, wetlands and aquifers
- Variety of land uses: residential, commercial, industrial, resort, preservation, and agriculture
- Fastest growth rate on O'ahu

Project Goals:

- Inventory existing watershed data and information
- Identify water resource issues and concerns.
- Describe potential preventive and remedial actions to protect and restore the ecosystem of Central O'ahu.

Federal Project Authority: *Planning Assistance to States Program, Section 22 of the Water Resources Development Act of 1974*





Waimano Ridge
Ko'olau Mountains

Onikiniki Stream
Waimalu Ditch

Waiahole Ditch

Housing

Golf Course

Agriculture

Campbell Industrial Park

Pearl Harbor

PROJECT BACKGROUND

Plan Area: Central O'ahu drainage area, including the Waikele watershed to Pearl Harbor, from Hālawā to Makaīwa watersheds

District Size: 110,257 acres; approximately 287,900 people

Watersheds: Hālawā, 'Aiea, Kalauao, Waimalu, Waiawa, Kapakahi, Waipi'o, Waikele, Honouliuli, Kalo'i, Makaīwa

STUDY PROCESS

DATA INVENTORY

STAKEHOLDER
CONSULTATION



COMPREHENSIVE ANALYSIS



POTENTIAL PROJECTS AND
PROGRAMS



**CENTRAL O'AHU WATERSHED
STUDY REPORT**

FOR MORE INFORMATION, PLEASE CONTACT:



U.S. ARMY CORPS OF ENGINEERS

Contact: Derek Chow
Phone: 438-7009
Email: derek.j.chow@usace.army.mil

Contact: Nani Shimabuku
Phone: 438-2940
Email: lorayne.p.shimabuku@usace.army.mil



HONOLULU BOARD OF WATER SUPPLY

Contact: Scot Muraoka
Phone: 748-5942
Email: smura@hbws.org

CONSULTANTS



OCEANIT
Contact: Jay Stone
Phone: 531-3017
Email: jstone@oceanit.com



TOWNSCAPE, INC.
Contact: Sherri Hiraoka
Phone: 536-6999
Email: sherri@townscapeinc.com