



BOARD OF WATER SUPPLY HĀLAU WAI MĀNOA FACT SHEET

WHAT: The Honolulu Board of Water Supply (BWS) is exploring the possibility of creating a place-based, hands-on learning area to promote the goals of forest restoration, watershed protection, water conservation, and sustainable agriculture. This proposed project is conceptualized as a:

- Farm (with small ancillary structures) to demonstrate and promote the BWS's goals of watershed management, water conservation, forest restoration, and sustainable agriculture;
- Gathering space for place-based educational programs for schools and other groups (e.g., a traditional meeting hale or similar open-air structure for gathering out of the elements);
- Place for hands-on opportunities to learn about watershed protection, sustainable agriculture/living (e.g., establishing and working on lo'i, gardening/practicing regenerative agricultural methods to grow own food/materials); and
- Base for mauka restoration and watershed partnership efforts in Mānoa (e.g., removal of invasive species including ungulate control, forest restoration with site appropriate native species, erosion control/soil stabilization to reduce polluted runoff and sediment loading of the streams).

WHERE: Located in the upper Mānoa Valley (a BWS priority watershed area)

WHO: For school groups and the general public

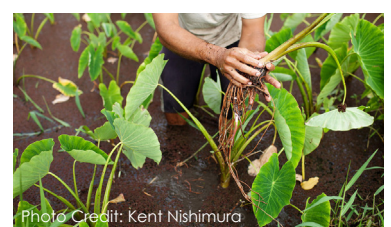
WHY: To provide an alternative outdoor learning space to learn about watersheds, forest health and watershed protection, water conservation, and sustainable resource management practices. Also, to provide community volunteer opportunities/work days for watershed restoration and sustainable agriculture.

WHEN: TBD (e.g., by appointment or on scheduled open/work days).

Revised 6/14/2019



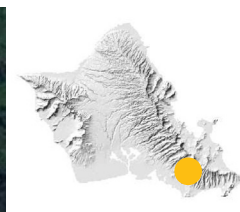
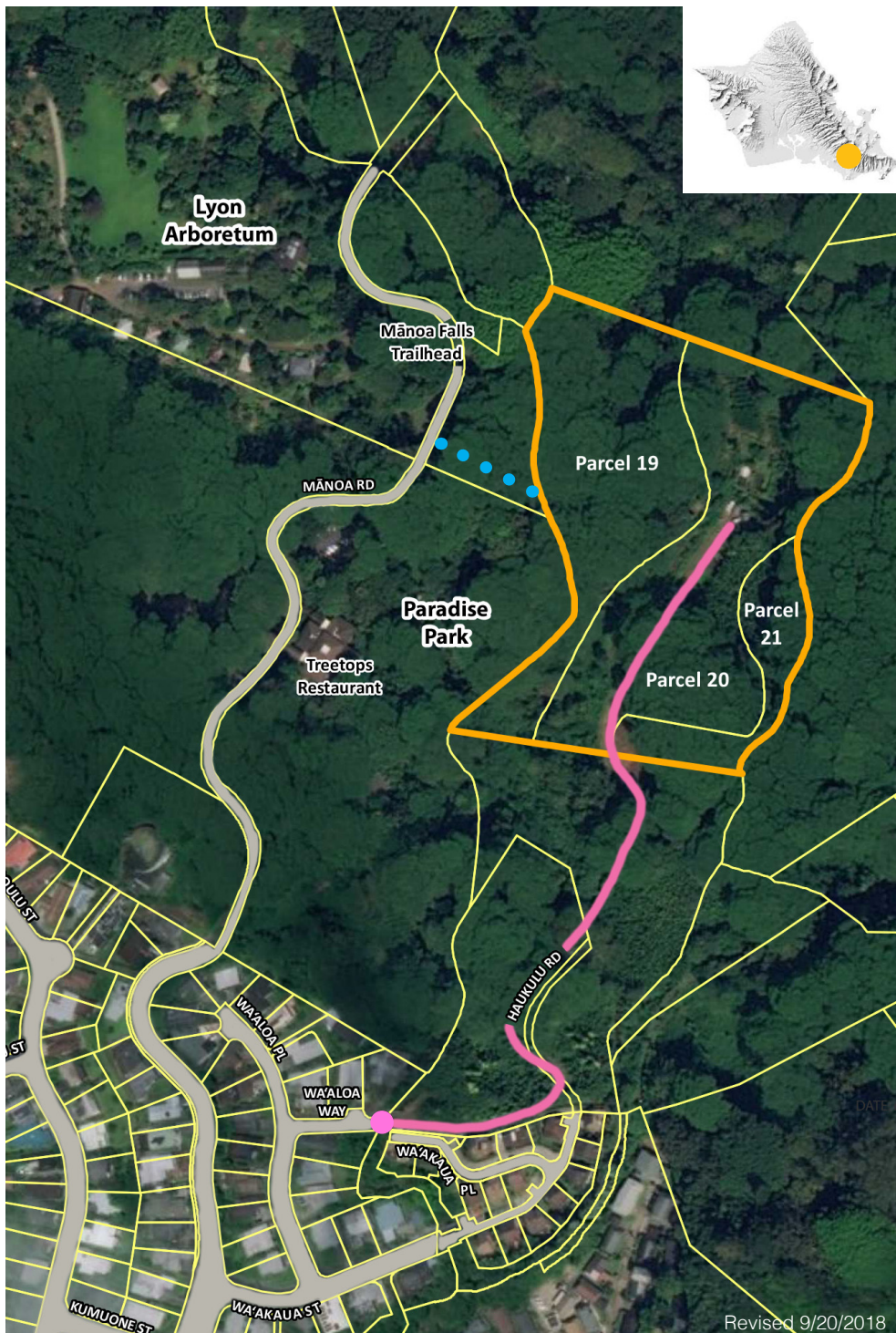
Header Photo Credit: Kent Nishimura











BOARD OF WATER SUPPLY | HĀLAU WAI MĀNOA

LOCATION MAP



-  Project Site
-  Roadway
-  Tax Map Key (TMK) Parcels
-  Existing Unpaved Access Road
-  Existing Access Gate
-  Proposed Access Trail



Board of Water Supply

For further information, please contact:
 Greg Nakai
 PBR Hawaii & Associates, Inc.
 (808) 521-5631



Revised 9/20/2018