



BOARD OF WATER SUPPLY

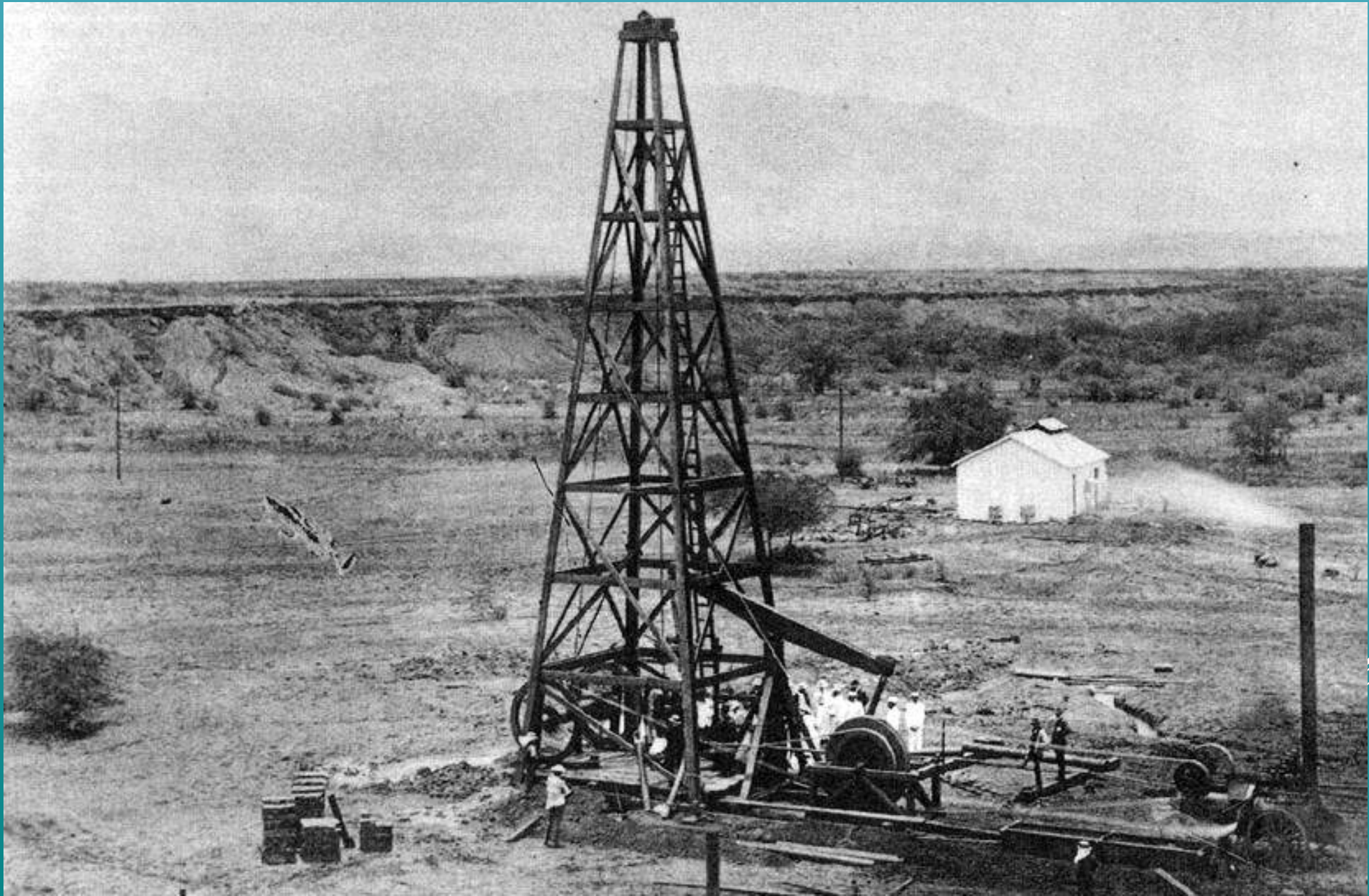
Art, Architecture, & History Tour

DOCOMOMO

September 27, 2019

Blaine Fergerstrom

ALOHA AND WELCOME TO ALL OUR FRIENDS!



1879 – LINCOLN LOY MCCANDLESS DRILLS IN THE BARREN EWA DISTRICT AND FINDS UNDERGROUND WATER.





MCCANDLESS DRILLS A SERIES OF WELLS FOR CATTLE RANCHER JAMES CAMPBELL IN THE BARREN EWA DISTRICT.





THIS MONUMENT STILL MARKS THE SPOT OF THE FIRST MCCANDLESS WELL AT THE CORNER OF FORT WEAVER ROAD AND OLD FORT WEAVER ROAD IN HONOLULU.

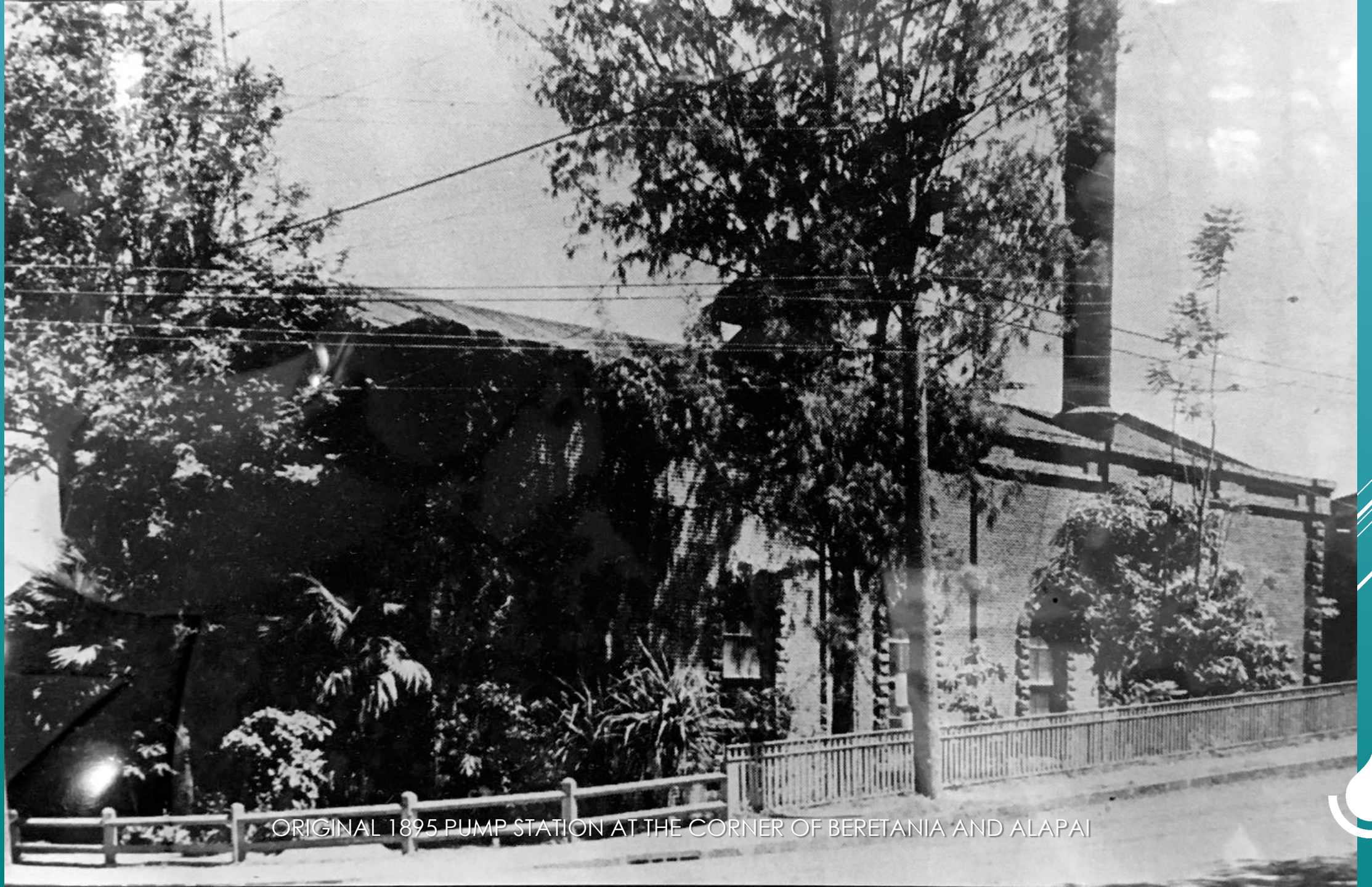


BERETANIA PUMP STATION

BUILT IN 1895 BY HONOLULU IRON WORKS,
WELL DRILLED BY MCCANDLESS BROS.
STEAM POWERED, PUMPS 3 MILLION GALLONS A DAY
CAPACITY DOUBLED APPROX 1911

BWS FOUNDED FEBRUARY 1929





ORIGINAL 1895 PUMP STATION AT THE CORNER OF BERETANIA AND ALAPAI







BWS TRUCK, FEBRUARY 2, 1930





BERETANIA PUMP STATION (RIGHT) AND ENGINEERING BLDG. (LEFT) AFTER 1939





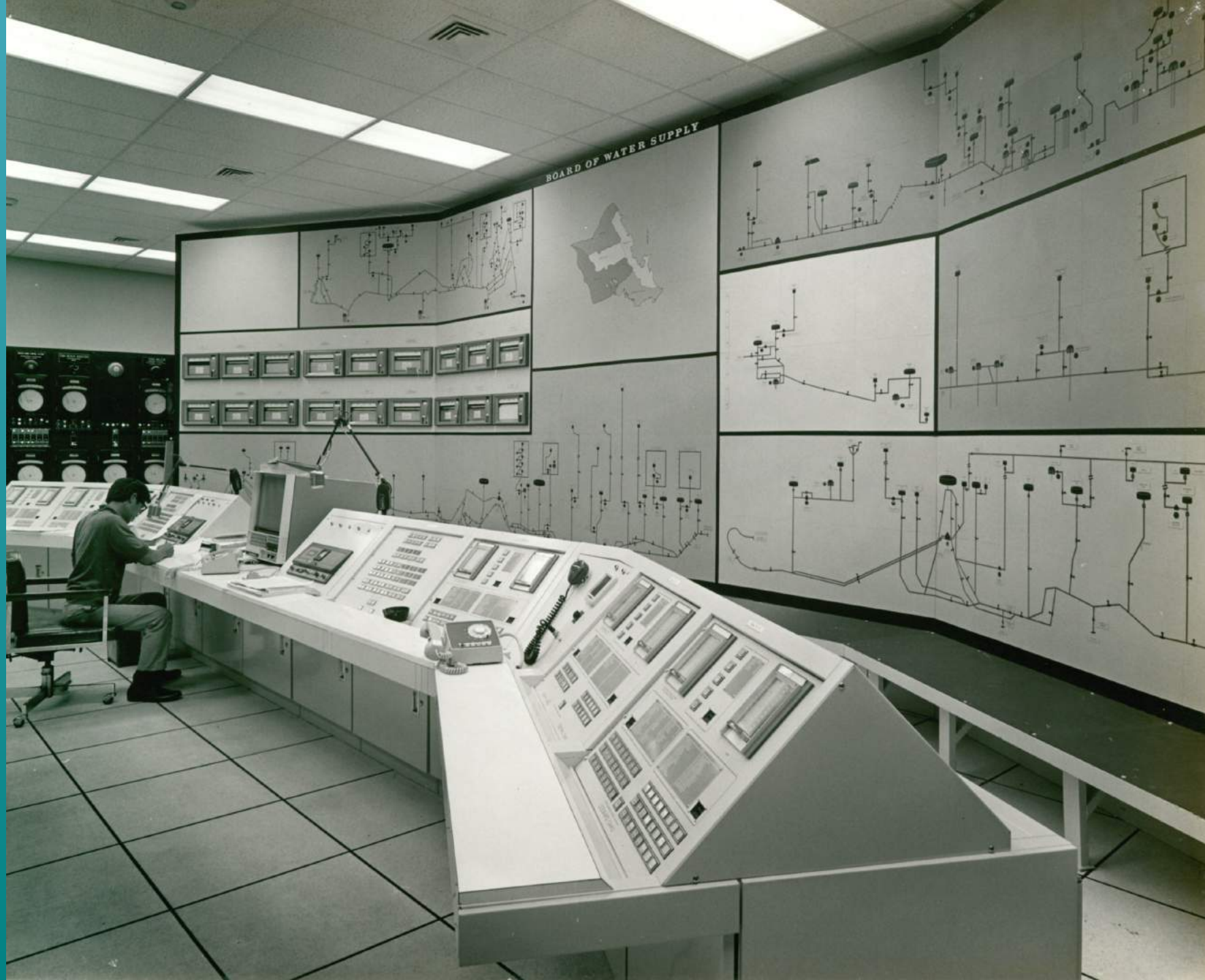
BWS TRUCK, APRIL 12, 1940 IN NEW ENGINEERING BLDG. PARKING AREA





WELL AT THE CORNER OF LISBON & BERETANIA











BWS PUBLIC SERVICE BUILDING

Grand Opening 1958
Designed by Hart Wood in 1949





BRAND NEW BERETANIA PUBLIC SERVICE BUILDING, 1958





BRAND NEW BERETANIA PUBLIC SERVICE BUILDING, 1958





FIRST CUSTOMER WITH CASHIER, 1958





FIRST DRIVE-THROUGH CUSTOMER, 1958





THE SKYWAY BRIDGE BETWEEN THE PUBLIC SERVICE AND ENGINEERING BUILDINGS.





FIRST COUPLE WITH CASHIER, 1958





JULIETTE MAY FRAZIER WORKING ON HER LOBBY MURAL



JULIETTE MAY FRAZIER WORKING ON HER LOBBY MURAL



JULIETTE MAY FRAZIER LOBBY MURAL ON OPENING DAY, 1958



BOARD OF WATER SUPPLY

Art & Architecture



ARD OF WATER SUPPLY

UWE KA LANI OLA KA HONUA





"PROMENADE," BY JULIETTE MAY FRAZIER, (1887-1983)





JULIETTE MAY FRAZIER WORKING ON HER LOBBY MURAL



JULIETTE MAY FRAZIER WORKING ON HER LOBBY MURAL







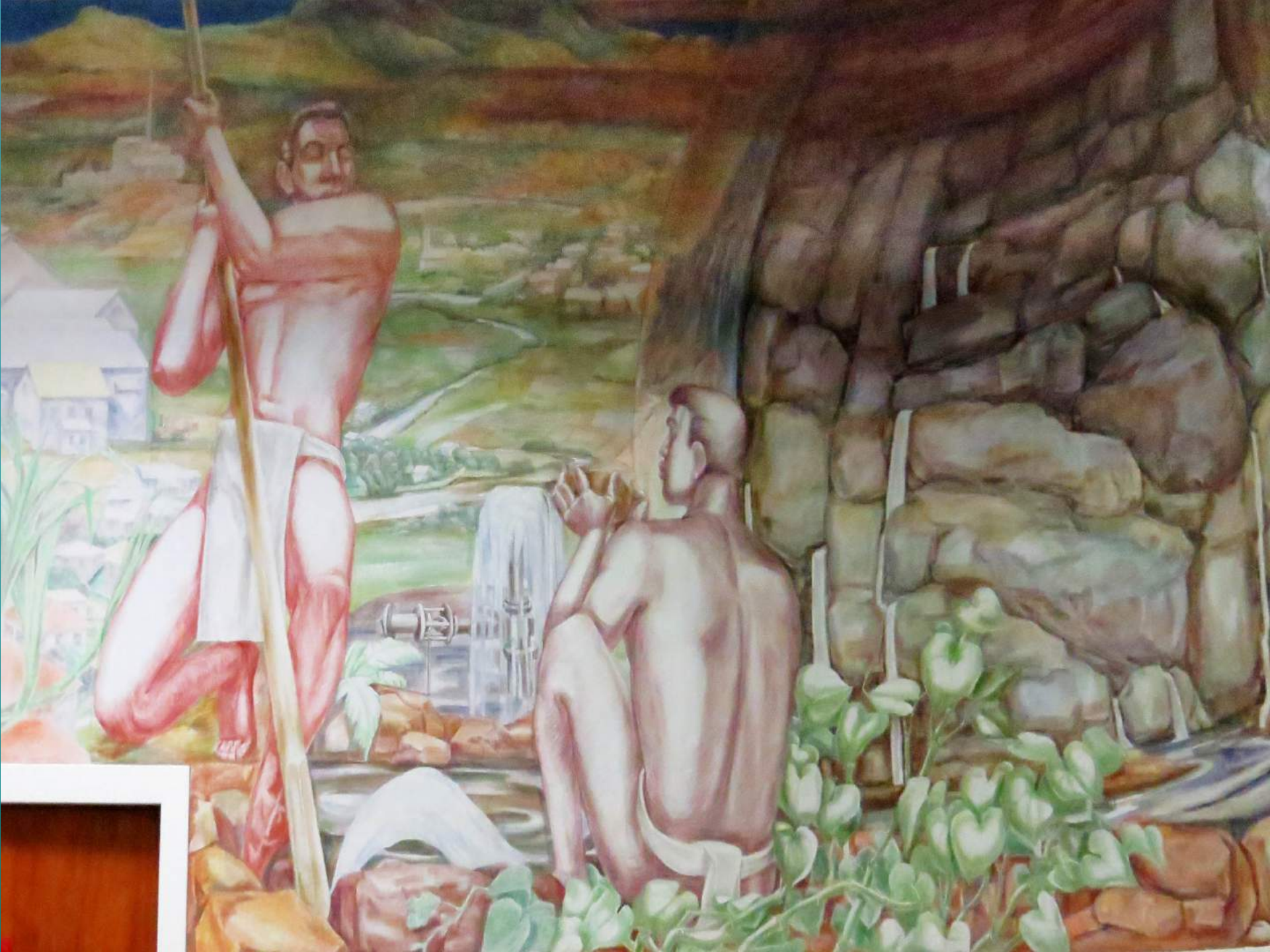




















WORKING PAY-PHONE BOOTH IN LOBBY ACROSS FROM ELEVATOR

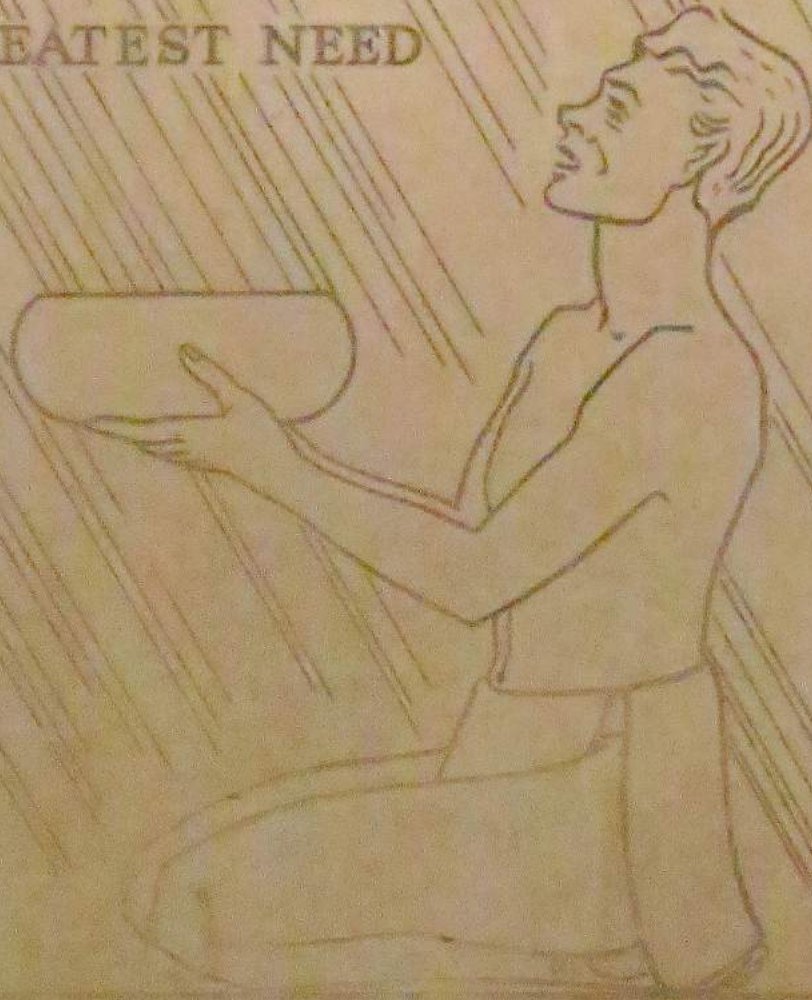




ELEVATOR DOOR ENGRAVED PLAQUE



PURE WATER
MAN'S
GREATEST NEED











1930s federal funds made many city fixtures possible

Honolulu Star-Advertiser 9 Jan 2012 JUNE WATANABE — Write to "Kokua Line" at Honolulu Star-advertiser, 7 Waterfront Plaza, Suite 210, 500 Ala Moana Blvd., Honolulu 96813; call 529-4773; fax 529-4750; or email kokualine@staradvertiser.com.

ANSWER: Yes, they were, although large portions have been removed as part of the ongoing Ala Moana/ Nimitz Highway improvement project.

The WPA was a New Deal agency that spent billions of dollars in the 1930s putting unemployed and unskilled workers to work on public works projects, including the construction of roads, bridges, buildings and parks; operating arts, music and literacy projects; and feeding and housing the poor.

Hawaii got some of the

QUESTION: While walking along Ala Moana Boulevard fronting Kewalo Basin, I noticed that the sidewalk is periodically stamped "WPA 1939." I do know that the Great Depression had special government projects created to supply jobs for the unemployed. The agency in charge was called the "Works Progress Administration," later renamed the "Work Projects Administration." The Ala Moana sidewalks seem to be in good shape if they are 72 years old. Were they made under the WPA? money even though it was only a territory back then.

Perhaps more interesting than the sidewalks is the fact that Ala Moana Beach Park, as well as several other city parks, were built with federal funding, either from the WPA or predecessor agencies.

We found out that bit of information from E. Tory Laitila, registrar for the Mayor's Office of Culture and the Arts.

In its November calendar of current events, his office highlighted "The Makahiki Festival," a pair of murals painted by Robert Lee Eskridge in the 1930s, funded by the WPA.

The murals are permanently installed at the ester Mccoy Pavilion (Ewa structure near the circular driveway behind the tennis courts) at Ala Moana Beach Park. (The pavilion is open to the public, 8 a.m. to 4 p.m. Monday through Friday, and during special events.)

Other works in the Art in City Buildings collection funded by the federal government in the 1930s are a floor mosaic and a pair of bas-relief panels, by Marguerite Louis Blasingame, also at Mccoy Pavilion; the "Roosevelt Portal" gate by Harry Sims Bent at Ala Moana Park and Atkinson Drive; the "Equestrian Bridge" by Bent at Ala Moana Park; and the "Ka Wai Ake Akua" mural by Blasingame at the entrance of the Board of Water Supply's main building.

With the help of the Hawaii Public Library's serials section, we obtained a copy of a March 7, 1936, Honolulu Star-bulletin article describing the development of what was then called "Moana Park" — the "newest

link in Honolulu's chain of playgrounds."

The article notes that with the creation of the Civil Works Administration and the Federal Emergency Relief Administration in 1933, two years before the WPA, construction began on the "sports pavilion, one small canal bridge, and the Roosevelt portals — the latter having been formally dedicated by President Roosevelt himself on July 27 during a visit to Hawaii."

With "effective and generous cooperation" by various federal agencies, work also was completed on Thomas Square, Aala Park, Lanakila Park, Waialae Park, Pauoa Park and the 75-foot-wide promenade along the Ala Wai, between Kalakaua Avenue and Ala Moana.

Within Moana Park a 27-foot, concrete-lined drainage ditch along the entire length of the park was built; the entire park area was graded; two lagoons were excavated; the piers and docks for the yacht club were erected; and half the 78-acre park covered with topsoil and equipped with a sprinkler system.

Laitila also pointed out that Board of Water Supply buildings were funded by the WPA. A stone plaque noting that fact is affixed to the Diamond Head-mauka corner of the BWS

building on Alapai Street, between Lisbon and Alapai streets.

MAHALO

To the good Samaritan who found my credit card at the Dillingham Foodland Supermarket parking lot and turned it in in December. — A very thankful senior

Write a comment...



Share



Comment



Save



More



Bump it



Dump it



FEDERAL WORKS AGENCY
PUBLIC WORKS ADMINISTRATION

JOHN M. CARMODY
FEDERAL WORKS ADMINISTRATION

FRANKLIN D. ROOSEVELT
PRESIDENT OF THE UNITED STATES

FRANKLIN D. ROOSEVELT, PRESIDENT OF THE UNITED STATES



KA WAI KE ĀKUA BY MARGUERITE LOUIS BLASINGAME



KA WAI KE AKUA BY MARGUERITE LOUIS BLASINGAME



ENGINEERING BLDG. CORNER STONE

1939



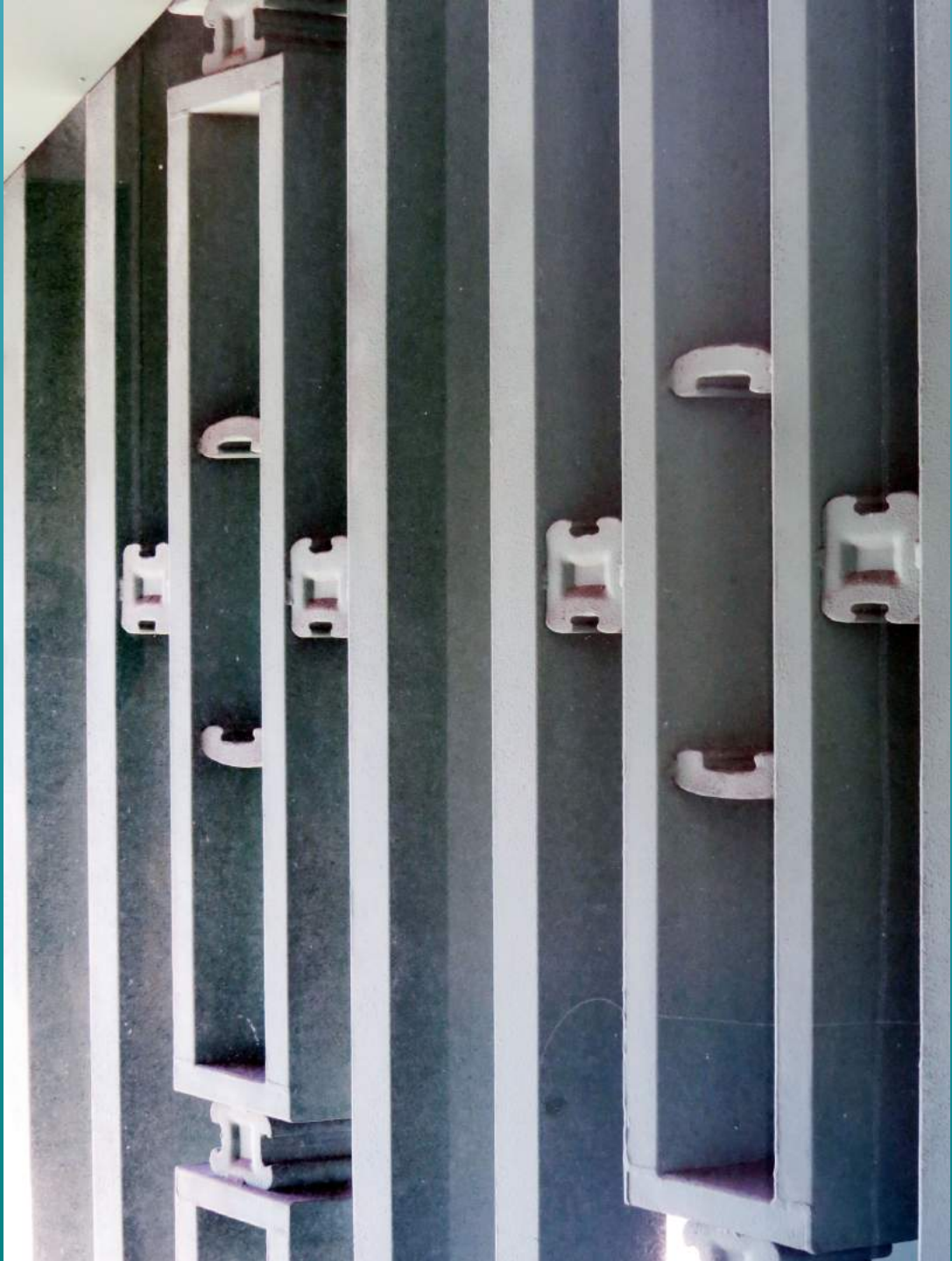




KA WAI KE AKUA BY MARGUERITE LOUIS BLASINGAME









IOLANI PALACE





IOLANI PALACE WELL NO. 29, 1923





W-116 WELL NO. 29 11-18-26

IOLANI PALACE WELL NO. 29, 1926





IOLANI PALACE WELL NO. 29, 1950S



KALIHI SHAFT





KALIHI SHAFT 1936





KALIHI SHAFT 2018



WAIHEE SHAFT











HALAWA SHAFT





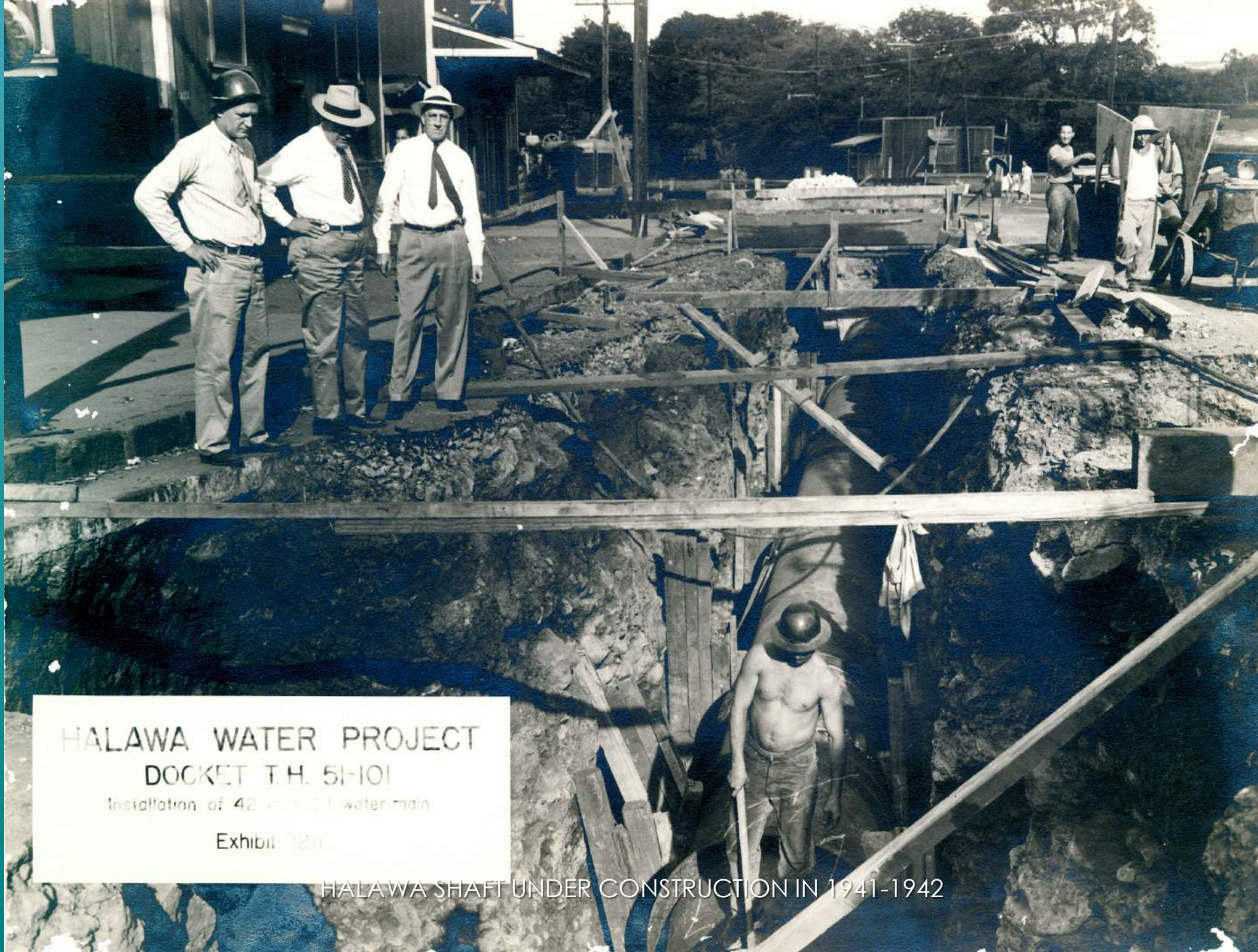
HALAWA SHAFT UNDER CONSTRUCTION IN 1941-1942





NORTH HALAWA STREAM 1943





HALAWA WATER PROJECT
DOCKET T.H. 51-101
Installation of 42 inch S.F. water main
Exhibit 72a

HALAWA SHAFT UNDER CONSTRUCTION IN 1941-1942





HALAWA SHAFT UNDER CONSTRUCTION IN 1941-1942





HALAWA SHAFT UNDER CONSTRUCTION IN 1941-1942





HALAWA SHAFT WATER 1943





HALAWA SHAFT WATER LEVEL 1947























KULIOUOU PUMP STATION





KULIOUOU PUMP STATION







KULIOUOU PUMP STATION





NUUANU RESERVOIR NO. 3

& PUMP STATION





IMAGINE YOU ARE PART OF A CREW EXPLORING NEAR A LAKE DEEP IN THE JUNGLE...





YOU CUT THROUGH THE JUNGLE CANOPY AND COME UPON SOME KIND OF ANCIENT, ABANDONED RUIN...





A STRUCTURE COVERED IN MOSS AND VINES, BUT APPARENTLY ONCE VERY HANDSOME AND WELL-DESIGNED...



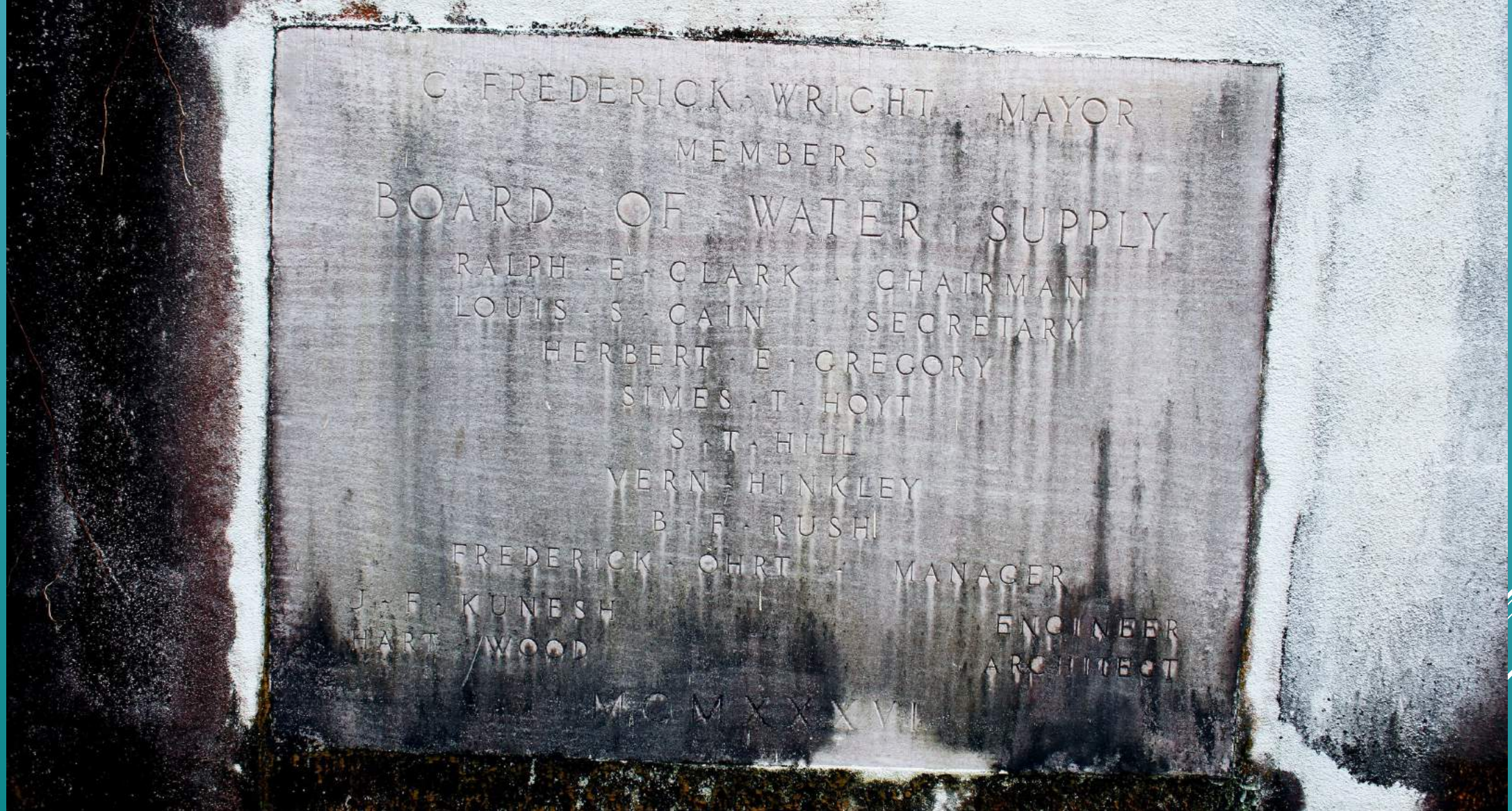






THERE IS A PLAQUE WITH AN INSCRIPTION WHICH GIVES CLUES TO THE ORIGINS OF THE MONUMENT...





MAYOR WRIGHT, BOARD OF WATER SUPPLY CHAIR RALPH CLARK, LOUIS CAIN, HERBERT GREGORY, SIMES HOYT, S.T. HILL, VERN HINKLEY, B.F. RUSH, AND MANAGER FREDERICK OHRT. J.F. KUNESH, ENGINEER, HART WOOD, ARCHITECT.
MCMXXXVL – 1936

THIS PLAQUE GRACES THE REAR WALL OF THE NUUANU RESERVOIR NO. 3 PUMPING STATION.





AN OLD DOOR IS PRIED OPEN AND THE EXPLORERS ENTER THE SPACE. WHAT IS THIS PLACE?





WHAT IS THIS THING?



IT IS A FOUNTAIN AND AERATOR WHICH AT ONE TIME FLOWED WITH LUSHLY CASCADING FRESH WATER.



NUUANU RESERVOIR NO. 4











BOARD OF WATER SUPPLY

MAHALO!

Blaine Fergerstrom
bfergerstrom@hbws.org
(808) 748-5316

Art, Architecture, & History Tour
DOCOMOMO
September 27, 2019

WWW.BOARDOFWATERSUPPLY.COM