



BOARD OF WATER SUPPLY
CITY & COUNTY OF HONOLULU

2016 Water Conservation Calendar

Water Matters: Conserve It



630 South Beretania Street • Honolulu, Hawai'i 96843 • (808) 748-5000
www.boardofwatersupply.com

FRIENDS OF
HĀLAWA XERISCAPE
GARDEN





Water Matters: Conserve It

Aloha!

In the 2015 Water Conservation Week Poster and Poetry Contests, the Board of Water Supply (BWS) challenged O‘ahu students in grades Kindergarten through 12 to learn about water’s remarkable journey from its source through a complex pipeline infrastructure to the tap. Fresh drinking water sustains public health and supports the quality of life we enjoy.

More than 1,400 student artists and 275 student poets answered the call, each demonstrating a clear understanding of the value of water and the need to conserve this precious resource. Their messages are conveyed throughout the BWS’s 2016 Water Conservation Calendar, which features the prize-winning entries that reflect the theme “Water Matters – Conserve It.”

Once again, the BWS is calling on ALL O‘ahu students to enter the 2016 Water Conservation Week Poster and Poetry Contests. Using the theme “PURE WATER—THERE IS NO SUBSTITUTE,” the BWS invites O‘ahu youth to consider and appreciate clean, fresh drinking water as one of our most valuable resources and that we all share responsibility to support efforts to protect our precious and finite water supply for generations to come. The poster contest is open to students in grades K – 6 while the poetry contest is open to students in grades 7 – 12.

This calendar contains a contest entry form, which includes the contest rules and more information on the reverse side. Details about the 2016 contests and theme are available in this calendar as well as online at www.boardofwatersupply.com, where supplemental educational materials will be made available. Through these contests, the BWS hopes to educate students about the importance of water conservation and to urge them to take an active role in ensuring the long-term viability of O‘ahu’s water supply.

The BWS would like to thank the Friends of Hālawā Xeriscape Garden, Sodexo, Times Supermarkets, Hawaii Energy, Alexander & Baldwin, Inc., Honolulu Hard Rock Cafe, Aloha Pacific Federal Credit Union, Board of Water Supply Federal Credit Union, and Pasha Hawaii for their generous sponsorship of this calendar. Inside you will find information about our sponsors, including some discount coupons. Contact the BWS at 748-5041 or contactus@hbws.org if you are interested in supporting this year’s contest and next year’s calendar.

On behalf of the BWS, thank you for your support to conserve water and please enjoy this calendar.

Mahalo to our Sponsors

Platinum Sponsor



Gold Sponsor



Silver Sponsor



PASHA HAWAII



**BOARD OF WATER SUPPLY'S
2016 WATER CONSERVATION WEEK POSTER AND POETRY CONTEST
ENTRY FORM**

DEADLINE: WEDNESDAY, FEBRUARY 24, 2016

Entries without a completed entry form will not be considered. **PLEASE FILL OUT THE ENTIRE FORM.** Please also ensure that each entry is clearly labeled on the back with the student's full name, grade, school name, and teacher's full name. (Typed labels are highly recommended.) Contact the BWS Communications Office at **748-5041** or contactus@hbws.org with questions.

Teacher Name Mr. / Ms. / Mrs. (circle one) _____

School _____

School Address _____

Contact Telephone No. _____ Grade Level _____

Email Address _____

My student(s) is/are entering the: POSTER Contest POETRY Contest

Total number of entries submitted: _____ POSTER Contest _____ POETRY Contest

How did you hear about this contest? (check ALL that apply)

- School Principal School Bulletin Board DOE Newsletter
- BWS Calendar News Media Social Media
- BWS Website Other (please specify) _____

The BWS provided supplemental information and activities on its website about the theme.

Was this useful in teaching your students about the contest theme and the importance of water conservation? Yes No

If you answered **No**, what kind of information or format would be more useful? _____

What theme or water conservation idea would you want the BWS to explore in future Water

Conservation Week contests? _____

How can we improve this contest? _____

By entering the contest, you agree to abide by the rules. Winning entries become the property of the Board of Water Supply. Poster and poetry entries will not be returned by the BWS, but non-winning entries may be picked up from the BWS Communications Office at 630 S. Beretania Street, during business hours by July 1, 2016.

BOARD OF WATER SUPPLY'S 2016 WATER CONSERVATION WEEK POSTER AND POETRY CONTEST RULES

THEME: “Pure Water – There Is No Substitute”

- Water is the essence of all living things and is an essential part of our daily lives. Fresh drinking water sustains our island community so it can survive and thrive.
- O’ahu’s unique geological landscape and water delivery system provides residents with safe, high quality drinking water, which supports all island life and makes the City and County of Honolulu a remarkable place to live.
- The Board of Water Supply (BWS) encourages students to reflect on, and convey in their artwork or poem, the value and importance of having clean, fresh drinking water from the tap:
 - ▷ O’ahu’s water is among the cleanest anywhere, having been purified through years of percolating downward through soil and volcanic rock.
 - ▷ The BWS conducts thousands of water quality tests throughout the year to protect public health and ensure O’ahu’s drinking water meets Federal and State drinking water standards.
 - ▷ Clean, fresh drinking water is one of our most valuable resources and we all share responsibility to support efforts to protect our precious water supply for generations to come.
- Students may depict but are not limited to these concepts: the water cycle; water quality; safe drinking water; watershed protection; general water conservation indoors, outdoors, at home, at work, and at play; recycled water; and sustaining water resources for future generations.
- Please remember that the predominant message should incorporate the theme as it relates to fresh drinking water.
- To learn more about this year’s contest theme, visit www.boardofwatersupply.com. Information about water conservation as well as supplemental educational material are available for download on the website.

ELIGIBILITY:

- The **POSTER** contest is open to Oahu students in grades Kindergarten through 6.
- The **POETRY** contest is open to Oahu students in grades 7 through 12.

SUBMISSION:

Deadline: Close of Business, **Wednesday, February 24, 2016**. (All entries must be received with a completed entry form by the deadline to be eligible.) Entries may be mailed or dropped off during regular business hours to the Board of Water Supply’s Communications Office at 630 South Beretania Street or to any Satellite City Hall.

JUDGING CRITERIA:

Entries will be judged on accuracy of information; originality; creativity; and artistic or writing ability, based on the student’s age, to convey the contest theme through art or poetry.

CONTEST RULES:

- All entries must reflect the theme of the contest.
- One entry per student. No collaborative work.
- Students must author their own poetry/draw their own poster. Plagiarism will result in immediate disqualification.
- All entries must be clearly labeled on the back, upper left corner with the student’s first and last name, grade, school name, and teacher’s first and last name. (Typed labels are highly recommended.)
- All entries must be accompanied by one completed entry form. If a teacher/parent is submitting multiple entries for his/her class/family, only one completed entry form is needed. **If a completed entry form is not received, the entry/entries will be disqualified.**
- **POSTERS** must be on a **12- x 18-inch** paper – landscape or portrait format (**Note:** If the paper size is difficult to find, purchase 24- x 36-inch paper and cut into four 12- x 18-inch pieces). Posters larger or smaller in size may be disqualified, including undersized artwork mounted on 12- x 18-inch poster board and/or paper. Poster entries using chalk, charcoal, oil-based crayons, or electronic mediums will be disqualified. All other art medium will be accepted. Posters cannot be three-dimensional.
- **POETRY** entries of any form are acceptable. Poetry entries must be **150 words or less**, and no longer than 20 lines. Entries must be submitted on a standard 8.5- x 11-inch letter-sized paper. Poetry must be typewritten or printed from a computer. Handwritten entries will not be accepted.

POSTER PICK UP:

Non-winning posters may be picked up at the BWS Communications Office at 630 S. Beretania Street, during regular business hours between May 2 and July 1, 2016. Posters that are not retrieved by the deadline will be discarded.

MORE INFORMATION:

Visit www.boardofwatersupply.com for a complete list of contest rules, detailed listing of where to submit the entries, information about the competition levels, a listing of prizes, or to download a contest entry form. Or, call the BWS Communications Office at **748-5041** or email contactus@hbws.org.

2016 Water Conservation Week Contest Theme

Pure Water – There is No Substitute



Many of us take for granted the availability of clean, safe tap water. Readily available at the turn of the tap, it arrives in our homes clean and safe for drinking, cooking, personal hygiene, and more.

On O‘ahu, we are fortunate to have water that is among the best in the world. As your water service provider, the Board of Water Supply (BWS) works hard to make sure our water is also the safest. Thanks to our island’s unique geological landscape, and through treatment and monitoring of our drinking water, the BWS delivers water that is safe to drink and available when and where you need it.

The Board of Water Supply is committed to providing safe, dependable, and affordable water, now and into the future.



Former logo of the Board of Water Supply depicts a Polynesian man collecting water in a calabash bowl.



Natural Filtration

On O‘ahu, drinking water begins as rain falling over the Ko‘olau and Waianae Mountain ranges. Because volcanic rock is porous, much of this rain is naturally filtered through the ground on its way to underground aquifers.



Treatment Systems

Before reaching consumers, water is minimally treated with chlorine to ensure it is safe to drink. In some areas, water may also be filtered through granular activated carbon treatment systems, if needed.



Water Quality Monitoring

The Board of Water Supply conducts thousands of water quality tests throughout the year to protect public health and to ensure O‘ahu’s water meets or exceeds all Federal and State drinking water standards.

Photo courtesy of Hawaii Government Employees Association



For more information about our drinking water, visit www.boardofwatersupply.com.

Honorable Mention Posters



Leah Fernando, Kindergarten
Makalapa Elementary School
Mrs. Ann Kamimura Reynoso



Zachary Litwin, Kindergarten
Makalapa Elementary School
Mrs. Dawn Lee



Taylor Douglas, Kindergarten
Holomua Elementary School
Mrs. Wendy Yee



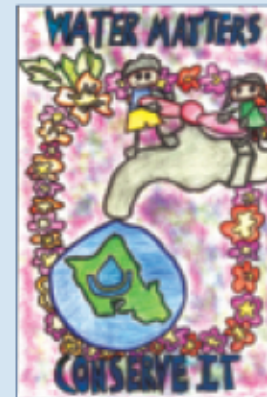
Jessica Roberts, Grade 2
Na'au
Mr. Melvin E. Spencer III



Presley Watland, Grade 2
Manoa Elementary School
Mrs. Wendie Kim



Daniel Shiraki, Grade 2
Manoa Elementary School
Mrs. Wendie Kim



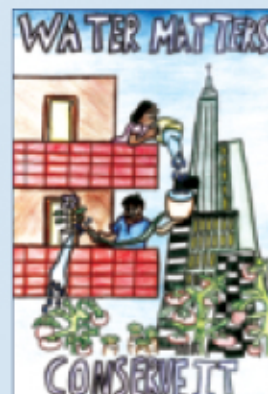
Brandon Yamashiro, Grade 3
Na'au
Mr. Melvin E. Spencer III



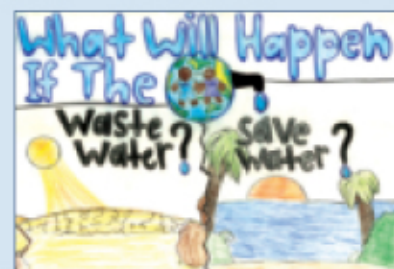
Chrissy Hori, Grade 4
Ma'ema'e Elementary School
Mrs. Ada Higuchi



Kourtney Nishimura, Grade 4
Na'au
Mr. Melvin E. Spencer III



Ryder Akimoto, Grade 5
Na'au
Mr. Melvin E. Spencer III



Hazel Tagaca, Grade 5
Gustav Webling Elementary School
Mr. Jason-Brian Ogawa



Neo Ramos, Grade 6
Holomua Elementary School
Mr. William Kane

Honorable Mention Poetry

Treat Him Like a Friend

He is my friend, he is your friend, he is a loyal friend to all
While he picks us up and dusts us off
In return, we let him fall

He does not care what color skin you have
Or where you live
The point is no matter who you are
His gift of life and health, he is sure to give

And his loyalty towards us is very strong
Even when everything we do for him
Is dishonorable and wrong

He has proved to us that he'll stay by our side
But it is not his choice to stay
If our loyalty towards him has died

He is water

And while water helps people all around the world live,
In return all people do is pollute and waste it
Instead of give

If we continue this, then loss of water will be our end
So stop wasting and polluting water
And treat water like you would treat a friend.

Grace Nastase
Grade 7, Kailua Intermediate School
Mrs. Denise Ebisuya

Water water where'd you go?

Water water where'd you go
You were here not too long ago
Are you here? Are you there?
Can I still find you somewhere?
Water water where'd you go
Water is pure, water can cure.
I need water, you need water
Every drop of it matters.
Just remember this is our nation.
Conservation comes with determination.
Without water, a life can't live without its foundation.
It doesn't matter how you conserve,
All it matters is how much you preserve.
Turn off that faucet, bring back that hose,
Save the water because that is the cause.
Water water where'd you go.
You were here not too long ago.

Meryll Fate Ronquillo
Grade 11, James Campbell High School
Ms. Noel Hakoda

WATER

Water
Splashing through eternity
It is a deity of life
Liquid for life
Dances on the ground
Sizzles with the sun
Flies with the clouds
It will be mist
It will be missed
The journey of a drop
Is much more than just
Slithering down throats
Slithering down moats
With charges it can be power
With purity it can be a savior
Water is life
Water is life
Water is life
Water

Brenton Cooke
Grade 9, Kaiser High School
Ms. Kara Lee

The Voices Unheard

"Rescue me!"
Water left running calls out
"Do you not see
that we're in a drought?"

"Turn me off tight!"
A dripping faucet cries
"One drop, a mite
Adds up, you guys!"

"Use me with care!"
A sprinkler pleads
"To waste not add to spare:
An ocean of ease!"

"Water conservation is key!"
All three say with woe
"It can be done by you and me,
and save our H₂O!"

Katie Kim
Grade 9, Moanalua High School
Mrs. Candace Chavez

Water Is Our Kuleana

Water
A pure and vital source of life
Nutrients and remedy it provides
A thirst-quencher that keeps us alive

We must be akamai and remember it's water we should reserve
It must be sustained and preserved
The way we can do that is to learn to conserve
In order to receive the pure water our bodies deserve

Water is always a needed thing
In showers, faucets, toilets, sinks, and even as our drink
We constantly use water, but we need to think
That water is used to keep us alive and for every living thing

Rainwater reservoirs for plants in pots
Irrigation canals for the crops
Water routes for gutters to dry spots
You'll save gallons of water and have fewer costs

We are given the kuleana
The responsibility to care for the 'āina
For all kane, wahine, and keiki, our ohana
To save our water, we need your kokua

Rhesel Rivera
Grade 8, St. John the Baptist Catholic School
Mrs. Mary Wellein

Water
One of the key factors to life as we know it
is starting to slowly lessen.
With a little twist of a nozzle,
it starts inching its way through the pipes
and down it falls.
As it runs faster and faster
fresh, drinkable water is wasted.

One after another they fall,
Each drop wasted is one less to be consumed.
How many more must fall
Until we understand the crucial importance?
One day, one decade, or one millennium?
Our existence depends on water.
All it takes is five less minutes in the shower
or a repair of a broken pipe
to save pints or even gallons of water.
How long until the water stops inching and dripping?
Start now and conserve this resource.

Kylie Umebayashi
Grade 11, Kaimuki Christian School
Ms. Joanna Fong



For the Sake of Aloha

Uwe ka lani, ola ka honua

Where the streams run, the fish swim

Where the rain falls, the wildlife thrive

Where there is water, life follows

Limited and finite

The oceans may be vast

But endless, they are not

An extra 10 minutes in the shower

Or even watering the plants too often

Can make all the difference

Conserve our priceless waters

So that the generations to come can follow in our footsteps

FIRST PLACE, Grade 9

Maggie Ching

Moanalua High School

Mrs. Candace Chavez



THIRD PLACE, Grade 4

Kylee Murata

Na'au

Mr. Melvin E. Spencer III

Sunday

Monday

Tuesday

Wednesday

Thursday

Friday

Saturday

January 2016

Memo

December 2015

S	M	T	W	T	F	S
		1	2	3	4	5
6	7	8	9	10	11	12
13	14	15	16	17	18	19
20	21	22	23	24	25	26
27	28	29	30	31		

February 2016

S	M	T	W	T	F	S
	1	2	3	4	5	6
7	8	9	10	11	12	13
14	15	16	17	18	19	20
21	22	23	24	25	26	27
28	29					

1 New Year's Day

2

3

4

5

6

7

8

9

10

11

12

13 2016 Water Conservation Week
Poster Contest (Grades K-6) &
Poetry Contest (Grades 7-12)
DEADLINE
FEBRUARY 24, 2016.
Log on to
boardofwatersupply.com
or call 748-5041
for more information.

14

15

16

17

18 Dr. Martin Luther King, Jr. Day

19

20

21

22

23

24

25

26

27

28

29

30

31



Harmony of Water

Long ago there was a battle for power
Each element fought for their domain
Water poured down troubling showers
Earth shook and complained
Fire and Air worked together to set the world ablaze
Everything shook, jumped, and rumbled
A sight that wouldn't cease to amaze
But Water stopped and thought while the others grumbled,
"We are full of discord and imbalanced—
Unorganized and confused"
So Water spoke out with valiance
And pronounced that this world should not be abused
She established harmony
And was granted a grand piece of the globe
Her sound mind cares for life artfully
She wears a vital robe
The loss of water is something we cannot permit
Water matters we must conserve it

FOURTH PLACE, Grade 12
Jamaal Tribune
Radford High School
Mr. Lane Yokoyama



THIRD PLACE, Grade 6
Maceybelle Floresca
Ewa Elementary School
Mr. Michael Maeda

Sunday	Monday	Tuesday	Wednesday	Thursday	Friday	Saturday
<p>January 2016</p> <p>S M T W T F S</p> <p>1 2</p> <p>3 4 5 6 7 8 9</p> <p>10 11 12 13 14 15 16</p> <p>17 18 19 20 21 22 23</p> <p>24 25 26 27 28 29 30</p> <p>31</p>	1	2 Groundhog Day	3	4	5	6
7	8 Chinese New Year (Year of the Monkey)	9 Mardi Gras	10 Ash Wednesday	11	12	13
14 Valentine's Day	15 Presidents' Day	16	17	18	19	20
21	22	23	24 DEADLINE for the 2016 Water Conservation Week Poster Contest and Poetry Contest	25	26	27
28	29	<p>March 2016</p> <p>S M T W T F S</p> <p>1 2 3 4 5</p> <p>6 7 8 9 10 11 12</p> <p>13 14 15 16 17 18 19</p> <p>20 21 22 23 24 25 26</p> <p>27 28 29 30 31</p>	Memo	<p><i>February 2016</i></p>		

Water is Life

Plop, plop, plop

The rusted red faucet dripping drop after drop

Every individual droplet pleads with anger

Stop! Don't let us plop, we mustn't waste another drop

Plead after plead, no one would listen

The water bill was long, all that writing could make up a song

You take a minute to stop and think

You realize you should've listened to the sink

You try and take it back

But nothing could be done

So you fix what you can, and save what's possible

You shut off the faucet whenever you can

You limit your shower to a 3 minute span

Use reusable items so you don't throw away

Which makes less waste to be dumped

into fine water to make it grey

For every grey droplet, less blue the world will have

Water is a crystal ball, it holds the future and helps us all

So remember, don't let the water plead

And in the future you'll have all you need



FOURTH PLACE, Grade 7
Thatcher Fernandez
Kailua Intermediate School
Mrs. Denise Ebisuya

THIRD PLACE, Kindergarten
Jayden Vea De Vera
Holomua Elementary School
Miss Michelle Matias

Sunday	Monday	Tuesday	Wednesday	Thursday	Friday	Saturday																																																																																				
<p>February 2016</p> <table border="1"> <tr><td>S</td><td>M</td><td>T</td><td>W</td><td>T</td><td>F</td><td>S</td></tr> <tr><td>1</td><td>2</td><td>3</td><td>4</td><td>5</td><td>6</td><td></td></tr> <tr><td>7</td><td>8</td><td>9</td><td>10</td><td>11</td><td>12</td><td>13</td></tr> <tr><td>14</td><td>15</td><td>16</td><td>17</td><td>18</td><td>19</td><td>20</td></tr> <tr><td>21</td><td>22</td><td>23</td><td>24</td><td>25</td><td>26</td><td>27</td></tr> <tr><td>28</td><td>29</td><td></td><td></td><td></td><td></td><td></td></tr> </table>	S	M	T	W	T	F	S	1	2	3	4	5	6		7	8	9	10	11	12	13	14	15	16	17	18	19	20	21	22	23	24	25	26	27	28	29						<p>April 2016</p> <table border="1"> <tr><td>S</td><td>M</td><td>T</td><td>W</td><td>T</td><td>F</td><td>S</td></tr> <tr><td></td><td></td><td></td><td></td><td></td><td>1</td><td>2</td></tr> <tr><td>3</td><td>4</td><td>5</td><td>6</td><td>7</td><td>8</td><td>9</td></tr> <tr><td>10</td><td>11</td><td>12</td><td>13</td><td>14</td><td>15</td><td>16</td></tr> <tr><td>17</td><td>18</td><td>19</td><td>20</td><td>21</td><td>22</td><td>23</td></tr> <tr><td>24</td><td>25</td><td>26</td><td>27</td><td>28</td><td>29</td><td>30</td></tr> </table>	S	M	T	W	T	F	S						1	2	3	4	5	6	7	8	9	10	11	12	13	14	15	16	17	18	19	20	21	22	23	24	25	26	27	28	29	30	1	2	3 Girls' Day	4	5
S	M	T	W	T	F	S																																																																																				
1	2	3	4	5	6																																																																																					
7	8	9	10	11	12	13																																																																																				
14	15	16	17	18	19	20																																																																																				
21	22	23	24	25	26	27																																																																																				
28	29																																																																																									
S	M	T	W	T	F	S																																																																																				
					1	2																																																																																				
3	4	5	6	7	8	9																																																																																				
10	11	12	13	14	15	16																																																																																				
17	18	19	20	21	22	23																																																																																				
24	25	26	27	28	29	30																																																																																				
6	7	8	9	10	11	12																																																																																				
 <p>NATIONAL GROUNDWATER AWARENESS WEEK (March 6 - 12)</p>																																																																																										
13 Daylight Saving Time Begins	14	15	16	17 St. Patrick's Day	18	19																																																																																				
 <p>NATIONAL FIX-A-LEAK WEEK / BWS DETECT-A-LEAK WEEK (March 14 - 20)</p>																																																																																										
20 First Day of Spring (Spring Equinox) Palm Sunday	21	22 World Water Day	23	24	25 Prince Jonah Kūhio Kalaniana'ōle Day (observed) Good Friday	26																																																																																				
																																																																																										
27 Easter Sunday	28	29	30	31	<p><i>March 2016</i></p>																																																																																					

April

Sponsored by:
ALEXANDER & BALDWIN, INC.
www.alexanderbaldwin.com

AB
ALEXANDER & BALDWIN, INC.

Sea Today, Tap Tomorrow

Waves of blue ocean glistening.
Then becomes hydration to the human body.
Streams never ending, flowing through and through
Voyage their way to the works and machines of faucets.
But the bodies of water are beginning to slip away.
Year after year, month after month, day after day.
Hour after hour, minute after minute.
Second after second.
This source of life slowly seeping its way out of existence.
But there is a way.
Showers of short periods,
Watering of proper amount.
Providing soil with water, not concrete with puddles.
Drinking and not wasting.
Sharing and not hogging.
The sea of many creatures becomes the liquid of life
for land habitants.
The sea today is the tap water of tomorrow.

SECOND PLACE, Grade 10
Francheska Manzano
James Campbell High School
Ms. Noel Hakoda



SECOND PLACE, Kindergarten
Gabriel Reyes
Na'au
Mr. Melvin E. Spencer III

Sunday

Monday

Tuesday

Wednesday

Thursday

Friday

Saturday

April 2016

Memo

March 2016

S	M	T	W	T	F	S
		1	2	3	4	5
6	7	8	9	10	11	12
13	14	15	16	17	18	19
20	21	22	23	24	25	26
27	28	29	30	31		

May 2016

S	M	T	W	T	F	S
1	2	3	4	5	6	7
8	9	10	11	12	13	14
15	16	17	18	19	20	21
22	23	24	25	26	27	28
29	30	31				

1 April Fools' Day

2

3

4

5

6

7

8

9

10

11

12

13 The BWS is on Facebook. Become a fan by clicking "Like" on our Page at [Facebook.com/BWSHonolulu](https://www.facebook.com/BWSHonolulu)

14

15 FEDERAL Income Tax Deadline

16

17

18

19

20 STATE Income Tax Deadline

21

22 Earth Day

23 Passover Begins

24

25

26

27 Administrative Professionals' Day

28

29

30 Passover Ends

May

Sponsored by:
HARD ROCK CAFE
www.hardrock.com/honolulu



Heavy Thoughts On Wasted Drops

Pipes leaking
Faucets creaking
Hoses running
Tubs draining
It is all using fresh water
There is no salt inside
It could preserve your life
Yet we laugh as the garden floods
The plants drowning in wasted resources
We shrug our shoulders at the dripping pipe
And shriek at the mold growing on the floorboards beneath
The smell burning our eyes and only then do we care
We just move on with our lives
We do not stop and think for even a moment
The state of the water matters very little to most
But if you find a minute in your day
A time to stop and think
Think heavy thoughts of all the wasted drops
Remember that there is a whole world
using up all the mountain streams
Now find time to fix the problems
Fix the pipes
Save a few drops

FOURTH PLACE, Grade 9
Annie Case
Radford High School
Mr. Lane Yokoyama



SECOND PLACE, Grade 2
Lacy Texeira
Our Lady of Good Counsel School
Miss Chantelle Enos

Sunday	Monday	Tuesday	Wednesday	Thursday	Friday	Saturday																																																																																			
1 May Day / Lei Day	2	3	4 Log on to boardofwatersupply.com to see the winners of the 2016 Water Conservation Week Poster & Poetry Contests	5 Boys' Day Cinco de Mayo	6	7																																																																																			
← BWS WATER CONSERVATION WEEK – NATIONAL DRINKING WATER WEEK (May 1 - 7) →																																																																																									
8 Mother's Day	9	10	11	12	13	14																																																																																			
15	16	17	18	19	20	21 Armed Forces Day																																																																																			
22	23	24	25	26	27	28																																																																																			
29	30 Memorial Day	31	<p style="text-align: center;">April 2016</p> <table border="1" style="width: 100%; text-align: center;"> <thead> <tr> <th>S</th><th>M</th><th>T</th><th>W</th><th>T</th><th>F</th><th>S</th> </tr> </thead> <tbody> <tr> <td></td><td></td><td></td><td></td><td></td><td>1</td><td>2</td> </tr> <tr> <td>3</td><td>4</td><td>5</td><td>6</td><td>7</td><td>8</td><td>9</td> </tr> <tr> <td>10</td><td>11</td><td>12</td><td>13</td><td>14</td><td>15</td><td>16</td> </tr> <tr> <td>17</td><td>18</td><td>19</td><td>20</td><td>21</td><td>22</td><td>23</td> </tr> <tr> <td>24</td><td>25</td><td>26</td><td>27</td><td>28</td><td>29</td><td>30</td> </tr> </tbody> </table>	S	M	T	W	T	F	S						1	2	3	4	5	6	7	8	9	10	11	12	13	14	15	16	17	18	19	20	21	22	23	24	25	26	27	28	29	30	<p style="text-align: center;">June 2016</p> <table border="1" style="width: 100%; text-align: center;"> <thead> <tr> <th>S</th><th>M</th><th>T</th><th>W</th><th>T</th><th>F</th><th>S</th> </tr> </thead> <tbody> <tr> <td></td><td></td><td></td><td></td><td>1</td><td>2</td><td>3</td> </tr> <tr> <td>4</td><td>5</td><td>6</td><td>7</td><td>8</td><td>9</td><td>10</td> </tr> <tr> <td>11</td><td>12</td><td>13</td><td>14</td><td>15</td><td>16</td><td>17</td> </tr> <tr> <td>18</td><td>19</td><td>20</td><td>21</td><td>22</td><td>23</td><td>24</td> </tr> <tr> <td>25</td><td>26</td><td>27</td><td>28</td><td>29</td><td>30</td><td></td> </tr> </tbody> </table>	S	M	T	W	T	F	S					1	2	3	4	5	6	7	8	9	10	11	12	13	14	15	16	17	18	19	20	21	22	23	24	25	26	27	28	29	30		<i>May 2016</i>
S	M	T	W	T	F	S																																																																																			
					1	2																																																																																			
3	4	5	6	7	8	9																																																																																			
10	11	12	13	14	15	16																																																																																			
17	18	19	20	21	22	23																																																																																			
24	25	26	27	28	29	30																																																																																			
S	M	T	W	T	F	S																																																																																			
				1	2	3																																																																																			
4	5	6	7	8	9	10																																																																																			
11	12	13	14	15	16	17																																																																																			
18	19	20	21	22	23	24																																																																																			
25	26	27	28	29	30																																																																																				



Preserve

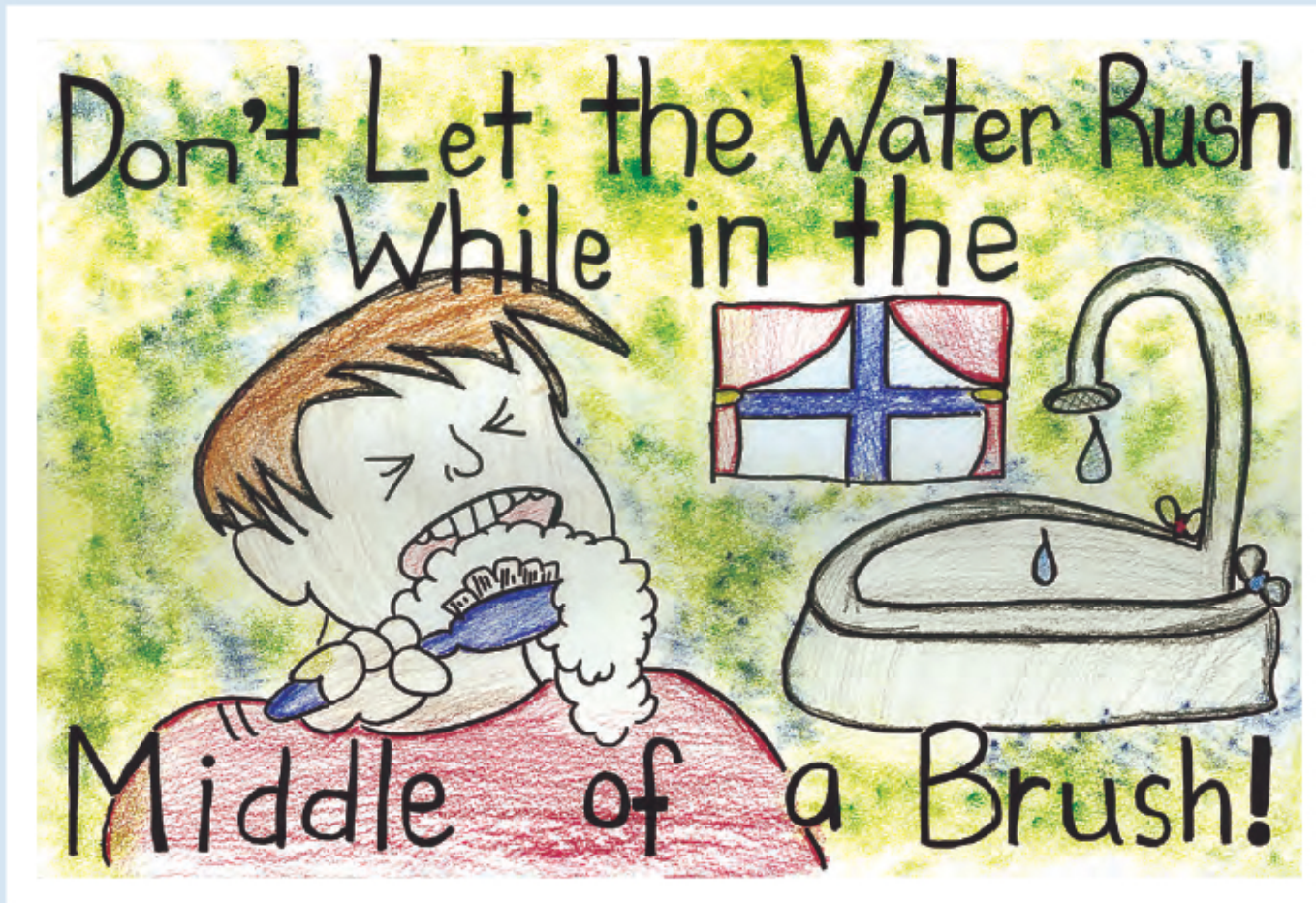
Why would you waste it? Off with the faucet,
Forgot it was on now it's gone you done lost it,
Darn it! This is how it starts it's the cause,
Of the fall of the sinks full of drinkable water,
You think this is harmless? these are the thoughts,
To release from your noggin' and cease to be harnesssed,
Regarding the water you need to preserve it,
. . . Please just reserve it and heed all the words,
That'll spring from these verses you heard it I'm sure it,
Won't take a-whole day to-go savin-yo H2O,
Maybe you'll salvage some rain for your plants,
Finish takin a bath before 8 minutes pass,
And erase all the gallons you waste in the past,
. . . Hey! while you're at it you'll save you some cash,
And the planet along with it . . . So go on get it,
This is a warning save up your water for long livin'

SECOND PLACE, Grade 12

Noah Ragas

Radford High School

Mr. Lane Yokoyama



SECOND PLACE, Grade 4

Reyn Yamauchi

Na'au

Mr. Melvin E. Spencer III

Sunday	Monday	Tuesday	Wednesday	Thursday	Friday	Saturday																																																																																											
<p>May 2016</p> <table border="1"> <tr><td>S</td><td>M</td><td>T</td><td>W</td><td>T</td><td>F</td><td>S</td></tr> <tr><td>1</td><td>2</td><td>3</td><td>4</td><td>5</td><td>6</td><td>7</td></tr> <tr><td>8</td><td>9</td><td>10</td><td>11</td><td>12</td><td>13</td><td>14</td></tr> <tr><td>15</td><td>16</td><td>17</td><td>18</td><td>19</td><td>20</td><td>21</td></tr> <tr><td>22</td><td>23</td><td>24</td><td>25</td><td>26</td><td>27</td><td>28</td></tr> <tr><td>29</td><td>30</td><td>31</td><td></td><td></td><td></td><td></td></tr> </table>	S	M	T	W	T	F	S	1	2	3	4	5	6	7	8	9	10	11	12	13	14	15	16	17	18	19	20	21	22	23	24	25	26	27	28	29	30	31					<p>July 2016</p> <table border="1"> <tr><td>S</td><td>M</td><td>T</td><td>W</td><td>T</td><td>F</td><td>S</td></tr> <tr><td></td><td></td><td></td><td></td><td></td><td></td><td>1 2</td></tr> <tr><td>3</td><td>4</td><td>5</td><td>6</td><td>7</td><td>8</td><td>9</td></tr> <tr><td>10</td><td>11</td><td>12</td><td>13</td><td>14</td><td>15</td><td>16</td></tr> <tr><td>17</td><td>18</td><td>19</td><td>20</td><td>21</td><td>22</td><td>23</td></tr> <tr><td>24</td><td>25</td><td>26</td><td>27</td><td>28</td><td>29</td><td>30</td></tr> <tr><td>31</td><td></td><td></td><td></td><td></td><td></td><td></td></tr> </table>	S	M	T	W	T	F	S							1 2	3	4	5	6	7	8	9	10	11	12	13	14	15	16	17	18	19	20	21	22	23	24	25	26	27	28	29	30	31							Memo	1	2	3	4
S	M	T	W	T	F	S																																																																																											
1	2	3	4	5	6	7																																																																																											
8	9	10	11	12	13	14																																																																																											
15	16	17	18	19	20	21																																																																																											
22	23	24	25	26	27	28																																																																																											
29	30	31																																																																																															
S	M	T	W	T	F	S																																																																																											
						1 2																																																																																											
3	4	5	6	7	8	9																																																																																											
10	11	12	13	14	15	16																																																																																											
17	18	19	20	21	22	23																																																																																											
24	25	26	27	28	29	30																																																																																											
31																																																																																																	
5	6 Ramadan Begins (North America)	7	8 Follow the BWS on Twitter at Twitter.com/BWSHonolulu	9	10 King Kamehameha I Day (observed)	11																																																																																											
12 Children's Day	13	14 Flag Day	15	16	17	18																																																																																											
19 Father's Day	20 First Day of Summer (Summer Solstice)	21	22	23	24	25																																																																																											
26	27	28	29	30	<i>June 2016</i>																																																																																												

July

Sponsored by:
SODEXO
www.sodexousa.com

sodexo
QUALITY OF LIFE SERVICES

wai
wasted
taken for granted
til our streams are trails--
when will we all start to care?
is anybody listening out there to our
pleas for conservation for all of O'ahu's
'ohana? or will our lack of care bring us all to
our knees? it will be too late in twenty-four years
when our island has dried all up its teardrops from
the sky--we must prolong the inevitable with rainwater
barrels, water catchment tanks, balanced ecosystems,
xeriscaping, leak checking, watering lawns at night, using
less water for cooking, doing full loads of laundry, water
recycling, low-flow toilets, soak instead of rinse, taking
shorter shower, avoid running the water, regular water
meter and maintenance checks, desalination plants,
watershed protection--all show that water matters
so why not be aware as all of us out there
conserve it--wai? 'cause can

FIRST PLACE, Grade 11
Christopher Lum
Na'au
Mr. Melvin E. Spencer III



SECOND PLACE, Grade 6
Jade Tamashiro
Kapolei Middle School
Mr. Daryle Mishina

Sunday

Monday

Tuesday

Wednesday

Thursday

Friday

Saturday

July 2016

Memo

June 2016

S	M	T	W	T	F	S
		1	2	3	4	
5	6	7	8	9	10	11
12	13	14	15	16	17	18
19	20	21	22	23	24	25
26	27	28	29	30		

August 2016

S	M	T	W	T	F	S
	1	2	3	4	5	6
7	8	9	10	11	12	13
14	15	16	17	18	19	20
21	22	23	24	25	26	27
28	29	30	31			

1

2

3

4 Independence Day

5 Ramadan Ends (North America)

6

7

8

9

10

11

12

13 Log on to boardofwatersupply.com or call 748-5041 for information about the 28th Annual Halawa Xeriscape Garden Open House & Unthirsty Plant Sale

14

15

16

17

18

19

20

21

22

23

24

25

26

27

28

29

30

31

August

Sponsored by:
**FRIENDS OF
HĀLAWA XERISCAPE GARDEN**



A Current Perspective on Water

What happens if it runs out?
Dries up from an eternal drought.

Would it be safe to say
you would have found a way
to stop the waste of H₂O?

It is time to know
this pair of elements
is more than “relevant”.

Even in Hawaii,
look around, you’re bound to see
it’s present every day
from humidity to Hanauma Bay.

Glanced upon in weather
but hardly, or never
do we notice the weight this
miniscule molecule
has on our
entire way of life.

THIRD PLACE, Grade 11
Maddison Matthews
Le Jardin Academy
Mr. John Murray

FIRST PLACE, Grade 3
Kaiya Ho’opai
Na’au
Mr. Melvin E. Spencer III

Sunday	Monday	Tuesday	Wednesday	Thursday	Friday	Saturday
<p>July 2016</p> <p>S M T W T F S</p> <p>1 2</p> <p>3 4 5 6 7 8 9</p> <p>10 11 12 13 14 15 16</p> <p>17 18 19 20 21 22 23</p> <p>24 25 26 27 28 29 30</p> <p>31</p>	1	2	3	4	5	6 28th ANNUAL Halawa Xeriscape Garden Open House & Unthirsty Plant Sale
7	8	9	10	11	12	13
14	15	16	17	18	19 Statehood Day (observed)	20
21	22	23	24	25	26	27
28	29	30	31	<p>September 2016</p> <p>S M T W T F S</p> <p>1 2 3</p> <p>4 5 6 7 8 9 10</p> <p>11 12 13 14 15 16 17</p> <p>18 19 20 21 22 23 24</p> <p>25 26 27 28 29 30</p>	<p><i>August 2016</i></p> <p>National Water Quality Month</p>	

September

Sponsored by:
HAWAII ENERGY
www.hawaiienergy.com



A drop of water is as precious as a gem. The most important thing for survival. We must care for each and every drop or soon all will be gone. Filling up most of the earth, coming down from above, we must save this little drop of love. From rivers to lakes this little drop will take a journey to our homes. So next time you take a sip, think twice about wasting a drip.

THIRD PLACE, Grade 7
Kimberly Yip
Kaimuki Christian School
Ms. Jeanne Holm



FIRST PLACE, Kindergarten
Alexander Zuehlsdorf
Makalapa Elementary School
Mrs. Ann Kamimura Reynoso

Sunday

Monday

Tuesday

Wednesday

Thursday

Friday

Saturday

September 2016

August 2016

S	M	T	W	T	F	S
	1	2	3	4	5	6
7	8	9	10	11	12	13
14	15	16	17	18	19	20
21	22	23	24	25	26	27
28	29	30	31			

October 2016

S	M	T	W	T	F	S
						1
2	3	4	5	6	7	8
9	10	11	12	13	14	15
16	17	18	19	20	21	22
23	24	25	26	27	28	29
30	31					

1

2

3

4

5

Labor Day

6

7

Follow the BWS on Twitter at [Twitter.com/BWSHonolulu](https://twitter.com/BWSHonolulu)

8

9

10

11

National Grandparents Day
Patriot Day

12

13

14

15

16

17

18

World Water Monitoring Day

19

20

21

22

First Day of Fall (Fall Equinox)

23

24

25

26

27

28

29

30

Memo



Water Conservation and the Ecosystem

Everyone, everything, all things
Rely on water to remain alive
For without it we won't survive

Everyone, everything, all things
Plants, animals and their habitats
No one can live without water for a fact

Everyone, everything, all things
But groundwater in our island ecosystem
Keeps dropping from too much consumption

Everyone, everything, all things
Rain has not been enough and faltered
Life in the inland ecosystem has been altered

Everyone, everything, all things
We all have a duty to conserve and preserve
Water our major natural resource reserve

Everyone, everything, all things
All of us depend on water
So, every drop really does matter



FIRST PLACE, Grade 5
Matthew Frisbie
Na'au
Mr. Melvin E. Spencer III

SECOND PLACE, Grade 7
Bethany Joy Calaycay
St. John the Baptist Catholic School
Mrs. Mary Wellein

Sunday

Monday

Tuesday

Wednesday

Thursday

Friday

Saturday

October 2016

Memo

September 2016

S	M	T	W	T	F	S
				1	2	3
4	5	6	7	8	9	10
11	12	13	14	15	16	17
18	19	20	21	22	23	24
25	26	27	28	29	30	

November 2016

S	M	T	W	T	F	S
		1	2	3	4	5
6	7	8	9	10	11	12
13	14	15	16	17	18	19
20	21	22	23	24	25	26
27	28	29	30			

1

2 Rosh Hashanah

3

4

5 The BWS is on Facebook. Become a fan by clicking "Like" on our Page at [Facebook.com/BWSHonolulu](https://www.facebook.com/BWSHonolulu)

6

7

8

9

10 Columbus Day (Federal Holiday)
Discoverers' Day (Hawaii)

11 Yom Kippur

12

13

14

15

← WORLD RAINFOREST WEEK (OCTOBER 10 - 16) →

16

17 National Boss Day

18

19

20

21

22 Make a Difference Day

23

24

25

26

27

28

29

30

31 Halloween

Mohala i ka wai ka maka o ka pua

Ola i ka wai a ka 'ōpua

There is life in the water from the clouds.
Rain gives life and from rain we receive water.
Fresh water runs through our mountains,
and goes all the way to our fountains.

So fresh water is there for generations to come,
turn off the sink when you're walking to and from.
Fresh water won't flow excessively,
if we don't take the time to conserve effectively.

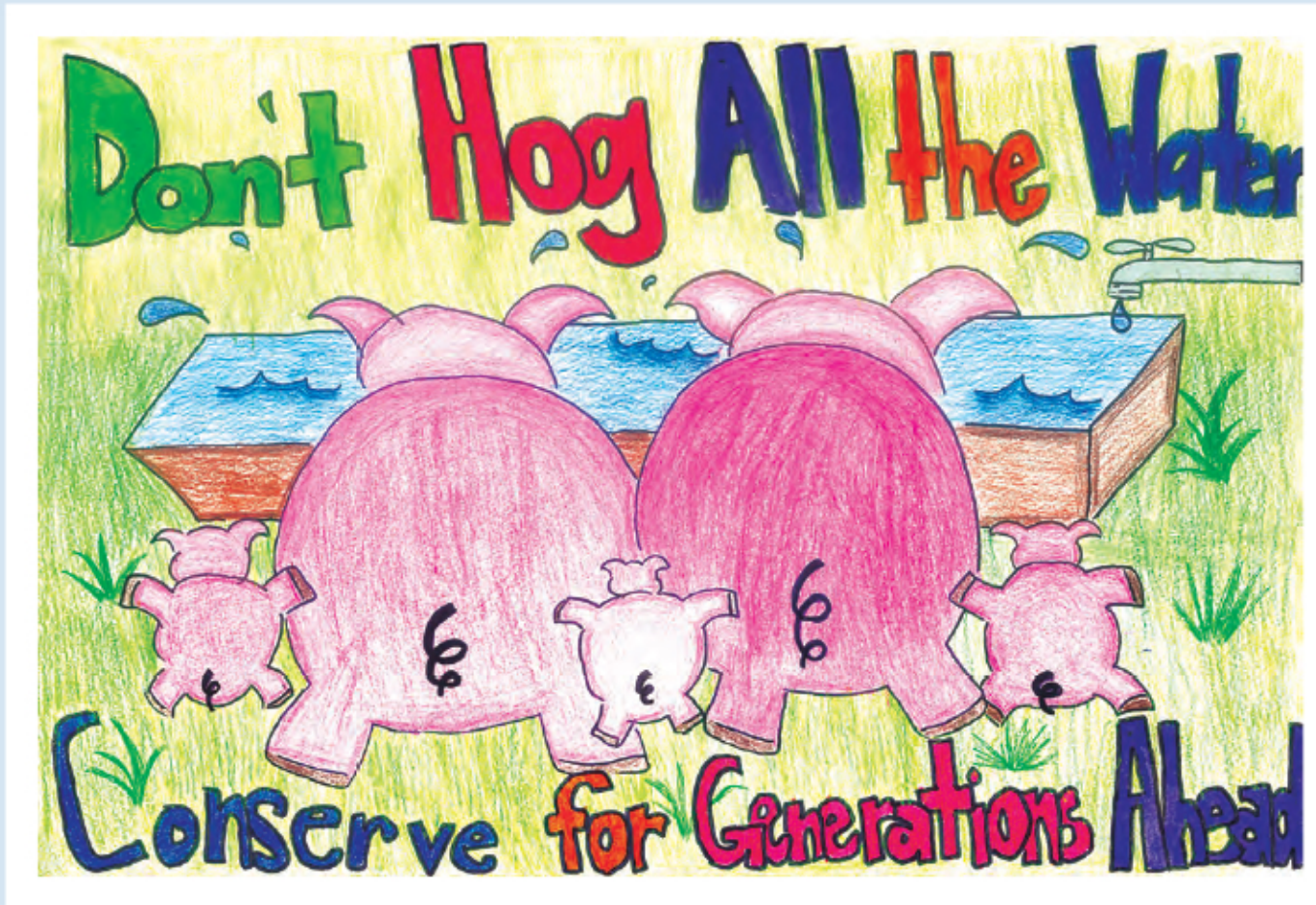
Mōhala i ka wai ka maka o ka pua
Unfolded by the water are the faces of the flowers.
Flowers thrive where there is water,
like our thriving sons and daughters.
Our hawaiian kupunas know
the importance of conserving water as it shows.
Mōhala i ka wai ka maka o ka pua

THIRD PLACE, Grade 10
Tatum Samson
James Campbell High School
Ms. Noel Hakoda



THIRD PLACE, Grade 2
Sammi Chan
Manoa Elementary School
Mrs. Wendie Kim

Sunday	Monday	Tuesday	Wednesday	Thursday	Friday	Saturday
<p>October 2016</p> <p>S M T W T F S</p> <p>1</p> <p>2 3 4 5 6 7 8</p> <p>9 10 11 12 13 14 15</p> <p>16 17 18 19 20 21 22</p> <p>23 24 25 26 27 28 29</p> <p>30 31</p>	<p>December 2016</p> <p>S M T W T F S</p> <p>1 2 3</p> <p>4 5 6 7 8 9 10</p> <p>11 12 13 14 15 16 17</p> <p>18 19 20 21 22 23 24</p> <p>25 26 27 28 29 30 31</p>	1	2	3	4 Arbor Day in Hawaii (Hawaii observance)	5
6 Daylight Saving Time Ends	7	8 General Election Day (Hawaii)	9	10	11 Veterans Day	12
13	14	15	16	17	18	19
20	21	22	23	24 Thanksgiving Day	25	26
27	28	29	30	Memo	<i>November 2016</i>	



FIRST PLACE, Grade 2
Ella Kawasaki
Na'au
Mr. Melvin E. Spencer III

H₂O, Our Life and Lung

It drips, it splashes, it pours
It falls free from the forested alpine peaks
The spawn of the crying clouds
Weeping tears of life and refreshment
Pitter patter, pitter patter . . .
Atop the great stone hills of the world
Thousands of trees sigh in relief as moist mist covers the land
Drenching the fields and greening the land
The life and lung of all things living
Yet many still take water for granted
It is their lifeforce
Yet they waste it like they do money
Water is a thing we must conserve
Worthy of being served in a silver cup
Without it, there would be no life
Never take water for granted
We need it to survive, it needs us to thrive
Keep the flow going, continue the cycle
So that in one million years . . . We still have . . .
Water

FIRST PLACE, Grade 7
Sean Aoki
Kailua Intermediate School
Mrs. Denise Ebisuya

Sunday

Monday

Tuesday

Wednesday

Thursday

Friday

Saturday

December 2016

November 2016

S	M	T	W	T	F	S
		1	2	3	4	5
6	7	8	9	10	11	12
13	14	15	16	17	18	19
20	21	22	23	24	25	26
27	28	29	30			

January 2017

S	M	T	W	T	F	S
1	2	3	4	5	6	7
8	9	10	11	12	13	14
15	16	17	18	19	20	21
22	23	24	25	26	27	28
29	30	31				

1

2

3

4

5

6

7

Pearl Harbor Remembrance Day

8

9

10

11

12

13

14

Log on to boardofwatersupply.com or call 748-5041 about the 2017 Water Conservation Week Poster Contest (Grades K-6) and Poetry Contest (Grades 7-12) and the 2016 Water Conservation Calendar

15

16

17

18

19

20

21

First Day of Winter (Winter Solstice)

22

23

24

Hanukkah Begins

25

Christmas Day

26

Kwanzaa Begins

27

28

29

30

31

Meet Our Poster Judges...



EVAN TOTTORI received an Elementary Education Professional Diploma from the University of Hawaii and a Masters in Fine Arts (M.F.A.) from Indiana University.

Evan was rewarded for his rich knowledge in art education, receiving the Della Frick Award for Excellence in Teaching Art Education (1996). Overall, he received five honors in art education and participated in nine exhibitions.

Shortly after completing his M.F.A., Evan returned to Hawaii to begin a career in the Hawaii Department of Education (DOE). Under the DOE, Evan served as Kapolei Middle School's Art Department Head (1999-2006); contributed to the Action Research Team for Fine Arts Standards in Hawaii (1999-2002); and taught art and exploratory crafts in the classroom.

Evan Tottori currently teaches Advanced Placement Art History for the Hawaii Virtual Learning Network E-school and serves as a Resource Teacher for the Art in Public Places/Artists in Residence Program. Along with his teaching duties with the Department of Education, he is also an accomplished metal and jewelry instructor at the Honolulu Museum of Art.



LISA UESUGI is a traditional, black & white, film photographer who insists that her work be custom-printed by hand. Lisa shoots with a photo-documentary approach, which lends a unique portraiture style to her work.

She is the principal owner of *Utopia Photography* and co-founder of *ProjectFocus Hawaii* - a ten year old non-profit which teaches at-risk kids how to take portraits using film cameras.

Lisa started capturing images 31 years ago when she was still in high school. She holds degrees in photography and in education. She was a Hawaii public school teacher for over 10 years, with five of the ten years devoted to teaching a middle-school arts program. She also served as a member of *Punahou's "Entrepreneurs-in-Residence" program* and is a community volunteer.

Lisa has clients throughout the State of Hawaii, the mainland and Asia, and is a mother of three.



ELLEN KITAMURA oversees the Board of Water Supply's (BWS) internal operations, focusing on management of source, storage, treatment, transmission, and distribution of water to ensure the sustainability of Oahu's water resources and infrastructure.

Ellen has been a BWS employee since 1982 when she was hired as a Civil Engineer. During her time as a Civil Engineer in the Technical Engineering Projects Branch of the Information Technology Division, she oversaw the staff responsible for providing Geographic Information System (GIS) application development and also managed the development and growth of HONU (Honolulu Online Utilities), the Department's award-winning GIS enterprise web-based application. GIS combines a databank with graphics to create a program that can map any item that has a geographic location such as pipeline, streets, and landmarks.

Prior to her joining BWS, Ellen worked for two years at a private civil engineering consulting firm and also spent a few years with the Hawaii National Energy Institute at the University of Hawaii (UH) at Manoa, where she was involved with the start-up of a geothermal project in Puna on the island of Hawaii. Originally from Hilo, Ellen earned her Bachelor of Science degree in Civil Engineering from the UH Manoa and is a licensed Professional Engineer.

Ellen is a former member of the Nuuanu/Punchbowl Neighborhood Board, Toastmasters International and enjoys making 'ohelo berry jam.

FREE SPACE COUPON

NO EXPIRATION DATE

YOUR COUPON HERE

Interested in being a sponsor for a future Water Conservation Calendar?

We'd love to hear from you!

Please contact the Board of Water Supply Communications Office at (808) 748-5041 or email ContactUs@hbws.org for more information.



Connect With Us On Social Media

Like, follow, & subscribe to BWS to receive information on customer services, community events, water savings tips, and more



[Facebook.com/BWSHonolulu](https://www.facebook.com/BWSHonolulu)



[Instagram @BWSHonolulu](https://www.instagram.com/BWSHonolulu)



[Twitter.com/BWSHonolulu](https://twitter.com/BWSHonolulu)



[Youtube.com/user/HonoluluBWS](https://www.youtube.com/user/HonoluluBWS)



THROW A BIRTHDAY PARTY THAT ROCKS

Book your Lil' Rocker's Birthday Party at Hard Rock Cafe in Waikiki!

Packages include balloons, scavenger hunt & free gift for birthday child. Starting at \$13 per child. Call +1-808-921-2246 to amp up your Lil' Rocker's Birthday Party!



HONOLULU | 280 BEACHWALK | +1-808-955-7383



We're proud to support the Board of Water Supply's stewardship of Oahu's resources and applaud the young artists who have made this calendar come to life.

AB
ALEXANDER & BALDWIN, INC.
alexanderbaldwin.com
A&B PROPERTIES
ITC&S
GRACE PACIFIC LLC



Hawaii Energy

YOUR CONSERVATION & EFFICIENCY PROGRAM

Visit HawaiiEnergy.com or call 808-537-5577 for energy-saving tips and rebates!

Hawaii Energy is independent of the electric utility. We are dedicated to helping residents and businesses save energy and money on their electric bills by offering rebates and incentives to offset the cost of installing energy-efficient equipment.

Schools
Mid Pacific Institute
Iolani School
Sacred Hearts Academy
Waialae Elementary School
St. Francis School
Maryknoll School
Hawaii Baptist Academy
Kaimaile Academy

Hawaii'i
Preparatory
Academy

Hongwanji
Mission
School

Universities
University of Hawaii
at Manoa
Hawaii Pacific University
University of Hawaii at Hilo

Healthcare
Straub Medical Center
Queens Medical Center
Kapi'olani Women's
Medical Center
Rehab Hospital
of the Pacific

We're with you every step of the way



Friends of Halawa Xeriscape Garden



JOIN THE FRIENDS OF HĀLAWA XERISCAPE GARDEN!

\$2.00 OFF ANY MEMBERSHIP

MEMBERSHIP BENEFITS:

- 10% off plant purchases at annual Xeriscape Plant Sale
 - Advance registration for workshops
- Supporting & lifetime members receive discounted workshop fees
 - "The Seasonal" - a semi-annual informational flyer
 - Volunteer opportunities

LIKE US ON FACEBOOK AT [WWW.FACEBOOK.COM/BWSHXG](https://www.facebook.com/BWSHXG)



\$5 OFF
40 oz. ACTION FLASK



Offer expires 6/30/16. One coupon per transaction. \$5 Off good on one Action Flask per coupon. Good at all Times and Big Save locations. Present coupon at time of purchase.





Board of Water Supply
2016 Water Conservation Calendar



*Mabalo to Hard Rock Cafe for sponsoring this year's
Board of Water Supply water conservation calendar and contests!*



*Mabalo to Hawaii Energy for sponsoring this year's
Board of Water Supply water conservation calendar and contests!*



Download membership application at
http://www.boardofwatersupply.com/files/fohxg_membership_form.pdf
Print hard copy of application, mail with payment and original coupon to:
Friends of Halawa Xeriscape Garden • P.O. Box 3 089 • Honolulu, Hawaii 96802
Please make check payable to: FOHXG
Coupon good for maximum two (2) memberships.
Offer good from January 1 through July 31, 2016.



Board of Water Supply
2016 Water Conservation Calendar



ALEXANDER & BALDWIN, INC.

*Mabalo to Alexander & Baldwin, Inc. for sponsoring this year's
Board of Water Supply water conservation calendar and contests!*



*Mabalo to Sodexo for sponsoring this year's
Board of Water Supply water conservation calendar and contests!*



*Mabalo to Times Supermarkets for sponsoring this year's
Board of Water Supply water conservation calendar and contests!*

Offer expires June 30, 2016

Meet Our Poetry Judges...



DR. ANNA VIGGIANO is an Educational Specialist at the State Department of Education (DOE), Gifted and Talented Program and Learning Centers.

In this position, she develops the professional development plan for Advanced Placement (AP) and pre-AP pipeline, created and distributed *Program Guide for Gifted and Talented* and related websites, and administered training and monitoring of 29 Learning Centers at 25 high schools statewide. She also obtained and managed several grants related to STEM and Advanced Placement initiatives.

Dr. Viggiano was instrumental in the implementation and guidance of the development of Hawaii Content and Performance Standards III. She earned her PhD in Curriculum & Instruction at the University of Hawaii (UH) at Manoa.

Dr. Viggiano has a creative side too! Prior to earning her Doctorate, she graduated from the UH Manoa with a Master's Degree in Drama and Theatre and has taught creative drama and puppetry at Punahou summer school.



MAHEALANI CYPHER is a community volunteer and Native Hawaiian cultural interpreter who worked for the Board of Water Supply over 22 years, later retiring as Honolulu City Clerk in 2008.

During her career with the BWS, she served as chief of community relations from 1990 to 2003. In that capacity, she managed the Department's staff responsible for its community relations work that comprised community outreach and water conservation education programs, which included annual Water Conservation Week activities. More recently, she served on the BWS Board of Directors from 2011 to 2015. A graduate of St. Andrew's Priory, she studied journalism and business at Woodbury College in Los Angeles, California, and journalism at the University of Hawaii at Manoa.

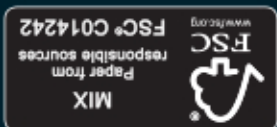
A great-grandmother and Kane'ohe resident, her current focus is on sharing Hawaiian history and legends through cultural awareness programs of the Ko'olaupoko Hawaiian Civic Club.



KEONI MATTOS is an Information Specialist with the Board of Water Supply (BWS) Communications Office, where he works to help educate Oahu residents about the municipal drinking water system, water conservation, and resource sustainability.

He contributes to this effort through the coordination, support, and promotion of various BWS outreach programs such as the Water Conservation Week Poster and Poetry Contests, Neighborhood Board Liaison Program, BWS Water Master Plan, Internet/Intranet Administration, Social Media, and Online Customer Services. Together, Keoni and his colleagues support the Department in its overall efforts to preserve Oahu's most precious resource and accomplish its mission to provide safe, dependable, and affordable water now and into the future.

Keoni is a proud graduate of Wallace Rider Farrington High School and has earned degrees in Business Administration from the University of Hawaii - West Oahu and eBusiness from Kapiolani Community College.



Board of Water Supply
630 South Beretania Street • Honolulu, Hawaii 96843 • (808) 748-5000
www.boardofwatersupply.com



Month	Days	Days	Days	Days	Days
January 2017	S M T W T F S	1 2 3 4 5 6 7	8 9 10 11 12 13 14	15 16 17 18 19 20 21	22 23 24 25 26 27 28 29 30 31
February 2017	S M T W T F S	1 2 3 4	5 6 7 8 9 10 11	12 13 14 15 16 17 18	19 20 21 22 23 24 25 26 27 28
March 2017	S M T W T F S	1 2 3 4	5 6 7 8 9 10 11	12 13 14 15 16 17 18	19 20 21 22 23 24 25 26 27 28 29 30 31
April 2017	S M T W T F S	1	2 3 4 5 6 7 8	9 10 11 12 13 14 15	16 17 18 19 20 21 22 23 24 25 26 27 28 29 30
May 2017	S M T W T F S	1 2 3 4 5 6	7 8 9 10 11 12 13	14 15 16 17 18 19 20	21 22 23 24 25 26 27 28 29 30 31
June 2017	S M T W T F S	1 2 3	4 5 6 7 8 9 10	11 12 13 14 15 16 17	18 19 20 21 22 23 24 25 26 27 28 29 30
July 2017	S M T W T F S	1	2 3 4 5 6 7 8	9 10 11 12 13 14 15	16 17 18 19 20 21 22 23 24 25 26 27 28 29 30 31
August 2017	S M T W T F S	1 2 3 4 5	6 7 8 9 10 11 12	13 14 15 16 17 18 19	20 21 22 23 24 25 26 27 28 29 30 31
September 2017	S M T W T F S	1 2	3 4 5 6 7 8 9	10 11 12 13 14 15 16	17 18 19 20 21 22 23 24 25 26 27 28 29 30
October 2017	S M T W T F S	1 2 3 4 5 6 7	8 9 10 11 12 13 14	15 16 17 18 19 20 21	22 23 24 25 26 27 28 29 30 31
November 2017	S M T W T F S	1 2 3 4	5 6 7 8 9 10 11	12 13 14 15 16 17 18	19 20 21 22 23 24 25 26 27 28 29 30
December 2017	S M T W T F S	1 2	3 4 5 6 7 8 9	10 11 12 13 14 15 16	17 18 19 20 21 22 23 24 25 26 27 28 29 30 31