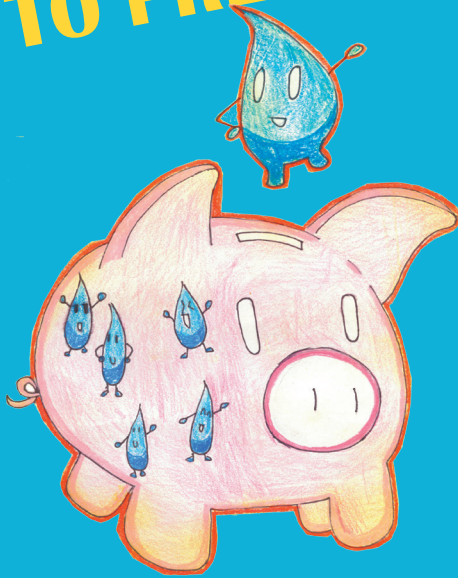




Board of Water Supply

2017 Water Conservation Week Poster & Poetry Contests

**CONSERVE
TO PRESERVE**



**Entry Deadline
Wednesday, March 1, 2017
4:30 p.m.**

**Mail or drop off to
Board of Water Supply, Communications Office
630 S. Beretania Street, Room 303
Honolulu, HI 96843
7:45 a.m. to 4:30 p.m. (M-F)
OR
to a Satellite City Hall listed below**

**For more information, call 748-5041
or visit www.boardofwatersupply.com**

Satellite City Hall Locations and Business Hours www.satellitecityhall.com/locations.html

**Ala Moana Center
1450 Ala Moana Blvd., #1286
9 a.m. to 5 p.m. Monday – Friday**

**Downtown
1000 Fort Street Mall
8 a.m. to 4 p.m. Monday – Friday**

**Hawaii Kai
(Hawaii Kai Corporate Plaza)
6600 Kalanianaʻole Highway, #101
8 a.m. to 4 p.m. Monday – Friday**

**Kalihi-Kapalama
(Kapalama City Square)
1199 Dillingham Blvd., #A109
8 a.m. to 4 p.m. Monday – Friday**

**Kalihi-Kapalama
(Kapalama City Square)
1199 Dillingham Blvd., #A109
8 a.m. to 4 p.m. Monday – Friday**

**Kaneohe
(Windward City Shopping Center)
45-480 Kaneohe Bay Drive, #C06
8 a.m. to 4 p.m. Monday – Friday**

**Kapolei Hale
1000 Uluohia St., #103
8 a.m. to 4 p.m. Monday – Friday**

**Pearlridge Center (Uptown)
98-1005 Moanalua Rd., #244B
9 a.m. to 5 p.m. Monday – Friday**

**Wahiawa
330 North Cane Street
8 a.m. to 4 p.m. Monday – Friday**

**Waianae
(Waianae Neighborhood Community Center)
85-670 Farrington Highway
8 a.m. to 4 p.m. Monday – Friday**